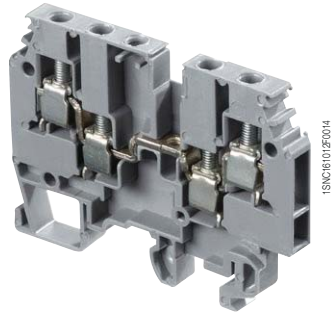


# M4/6.4A screw clamp terminal blocks

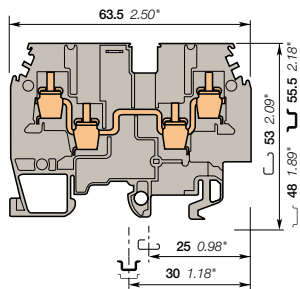
## Feed-through - 6 mm 0.236 in spacing



4 mm<sup>2</sup>  
10 AWG



M4/6.4A



6 mm 0.236 in spacing

### Description

- Ease one potential distribution on 4 independent screw clamps,
- Flexibility: snap onto symmetrical and asymmetrical rails.

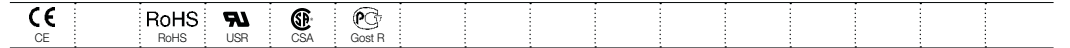
### Ordering details

Description	Color	Type	Order code	Pkg qty	Weight (1 pce) g
Feed-through	Grey	M4/6.4A	1SNA115479R2300	50	20.00
	Blue	M4/6.4A.N	1SNA125479R2500	50	20.00

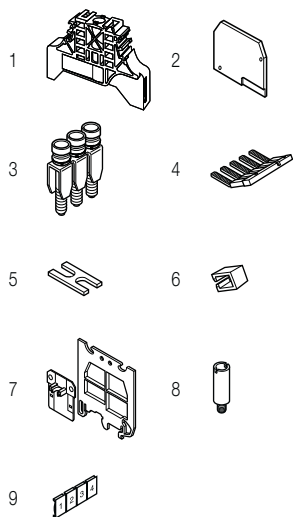
### Main technical data

Connecting capacity		IEC	UL	CSA	Rail	Wire stripping length	Tool	Torque
1 conductor per clamp	Rigid - Solid / Stranded	0.2-4 mm <sup>2</sup>	22-10 AWG	12 AWG	G32, TH 35-7.5, TH 35-15	9.5 mm 0.37 in	Flat screwdriver Ø 4 mm Ø 0.157 in	0.5 - 0.8 N.m 4.4 - 7.1 lb.in
	Flexible with insulated ferrule	0.22-4 mm <sup>2</sup>						
Gauge		A4						
Rated current / Rated cross section		32 A / 4 mm <sup>2</sup>	20 A / 10 AWG	25 A / 12 AWG				
Rated short-time withstand current (1s)		480 A						
Rated voltage		800 V	600 V	600 V				
Impulse withstand voltage		8000 V						
Protection		IP20	NEMA 1					

The connecting capacity data for one Rigid - Solid / Stranded - Flexible conductor (when applicable) is a mandatory information required by IEC, UL and CSA standards. All other data are provided as supplementary information only. For more details, please consult our CB, UL or CSA certificates and technical datasheet available on <http://www.abb.com>

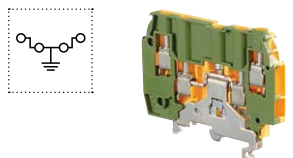


### Accessories



Description	Color	Type	Order code	Pkg qty	Weight (1 pce) g	
1 End stops	Grey	BAM2	1SNA206351R1600	50	12.00	
		BADL	1SNA399903R0200	50	4.70	
2 End sections	Grey	FEM4A	1SNA116629R2200	20	3.80	
3 Jumper bars	Grey	2 poles	BJMI6-2	1SNA176663R0000	10	4.40
		3 poles	BJMI6-3	1SNA176664R0100	10	6.70
		4 poles	BJMI6-4	1SNA176665R0200	10	8.90
		5 poles	BJMI6-5	1SNA176666R0300	10	11.20
		10 poles	BJMI6-10	1SNA176667R0400	10	22.40
4 Lateral jumper bars	Grey	2 poles	PC6-2	1SNA113546R1400	10	2.00
		10 poles	PC6-10	1SNA113548R2600	10	8.00
5 Cross spacing jumpers	Grey	5 mm 0.200 in - 6 mm 0.236 in - 8 mm 0.315 in	EL6	1SNA173627R2100	10	0.10
		Universal screw jumper bar kit N°1	BJDP1	1SNA179623R0300	10	7.00
		Universal screw jumper bar kit N°III	BJDP3	1SNA179625R0500	10	5.00
6 Insulating tips		For lateral jumper bars type PC...	EIP	1SNA113550R2400	10	
7 Circuit separators	Grey	0 mm	SCM6	1SNA113003R1000	10	0.30
8 Test sockets	Grey	DIA 2 mm 0.079 in	AL2	1SNA163043R2100	50	0.90
		DIA 3 mm 0.120 in	AL3	1SNA163261R0000	50	1.20
9 Terminal block markers	White	Blank card	RC610	1	7.50	

Complete list of accessories is indicated in the terminal block datasheet. Some accessories such as jumper bars may modify the terminal block's ratings: complete information in the accessories catalogue pages.



### Ground screw clamp terminal blocks

Description	Color	Type	Order code	Pkg qty	Weight (1 pce) g
Ground	Green-yellow	M4/6.4A.P	1SNA195638R2300	50	22.00

All the technical data for UL/CSA standard and dimensions in inches are in *italics*. Technical data valid for copper conductors only.