



Excel™ E1200

# Excel™ Series

## Value Engineered Access Hardware

Economically priced alternative to low cost imports. Quality and flexibility for Commercial Applications. The Excel™ product line is designed for system integrators, distributors, installers and building owners presently using low cost import or private label brand access control hardware

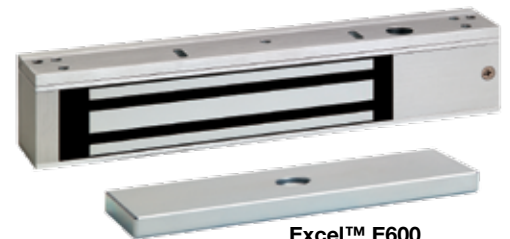
### MAGNETIC LOCKS

The Excel™ Architectural Series full featured magnetic locks are easier to install and provide superior, less obtrusive appearance compared to stainless steel epoxy sealed magnetic locks. Full monitoring is standard. The quick mount assembly reduces installation time compared to epoxy sealed magnetic locks.

The value priced Excel™ E6200 Commercial Series full featured magnetic lock is made of an epoxy sealed satin stainless steel housing and utilizes the same mounting template as major competitive brands. Full monitoring is standard. Recommended for interior doors or outdoor gate applications.



Excel™ E6200



Excel™ E600

### MODELS

**E6200** Security Access Control, & Mantraps, Indoor/Outdoor, 1200 lb / 545 kg holding force

**E1200** Security Access Control & Mantraps, 1200 lb / 545 kg holding force

**E600** Traffic Control, Air-Locks & Communicating Bathrooms, 600 lb / 272 kg holding force





## EXCEL™ E6200 MAGNETIC LOCK

### APPLICATION

#### Security Access Control, & Mantraps, Indoor/Outdoor

1200 lb / 545 kg holding force magnetic lock for exterior, perimeter and interior door security and access control. Magnetic bond sensor and door status outputs are included for remote monitoring, mantraps and system application needs.

### STANDARD FEATURES

- Retrofits Securitron M62 and Locknetics 70 locks
- Magnetic Bond Sensor indicates door locked with full holding power
- Door Status indicates door open or closed
- Epoxy sealed electronics, tamper resistant and weatherized for indoor and outdoor use
- Stainless steel machine screws and blind nuts
- 10 ft [3.05m] jacketed, stranded conductor cable
- Dual voltage 12/24VDC
- Architectural stainless steel housing, US32/630

### SPECIFICATIONS

#### Mechanical

Holding Force: 1200 lbs / 545 kg

**Housing** Stainless steel epoxy filled, all internal components sealed and weatherized

**Lock** 8" L x 3" H x 1-49/64" D; (203L x 73.5H x 45.7D mm)

**Armature** 6" L x 13/16" H x 2-11/16" D; (152 L x 20.63 H x 68.26 D mm)

#### Electrical

**Wiring** 10 Ft [3.05 m] jacketed, stranded conductor cable for power input and status outputs

**Circuitry** Voltage and current spike protection and instant release anti-residual magnetism circuitry

**Voltage** 12/24VDC, field selectable

**Current** 250mA @ 12VDC; 125mA @ 24VDC

**Magnetic Bond Sensor** SPDT, 250 mA @ 30VDC

**Door Status Contact** SPDT, 250 mA @ 30VDC

**Weight** 12.0 lbs





**EXCEL™ E1200** MAGNETIC LOCK

**APPLICATION**

**Security Access Control & Mantraps**

1200 lb / 545 kg holding force magnetic lock for perimeter and interior door security and access control. Door and lock status outputs included for remote monitoring, mantraps and system application needs.

**STANDARD FEATURES**

- Door status, lock status and Bi-color LED
- Interlocking quick mount assembly
- Adjustable mounting bracket with choice of self drilling and tapping mounting screws or machine screws
- Wire access chamber with terminal block
- Dual voltage 12/24VDC
- 628 Clear anodized aluminum

**SPECIFICATIONS**

**Mechanical**

Holding Force: 1200 lbs / 545 kg

**Lock** 10-1/2" L x 2-7/8" H x 1-5/8" D;  
(266 L x 73 H x 41 D mm)

**Armature** 7-5/16" L x 2-3/8" H x 5/8" D;  
(186 L x 61 H x 16 D mm)

**Electrical**

**Circuitry & Wiring:** PC board with voltage and current spike protection, instant release anti-residual magnetism circuit, terminal block for power input and status outputs

**Circuitry** Voltage and current spike protection and instant release anti-residual magnetism circuitry

**Voltage** 12/24VDC, field selectable

**Current** 500 mA @ 12VDC; 250 mA @ 24VDC

**Lock Status Contact** SPDT, 2 Amp @ 30VDC

**Door Status Contact** SPDT, 250 mA @ 30VDC

**Weight** 10.0 lbs



**EXCEL™ E600** MAGNETIC LOCK

**APPLICATION**

**Traffic Control, Air-Locks & Communicating Bathrooms**

600 lb / 272 kg holding force magnetic lock for interior door traffic control where physical attack is not a concern. Door and lock status outputs included for remote monitoring, mantraps and system application needs.

**STANDARD FEATURES**

- Door status, lock status and Bi-color LED
- Interlocking quick mount assembly
- Adjustable mounting bracket with choice of self drilling and tapping mounting screws or machine screws
- Wire access chamber with terminal block
- Dual voltage 12/24VDC
- 628 Clear anodized aluminum

**SPECIFICATIONS**

**Mechanical**

Holding Force: 600 lbs / 272 kg

**Lock** 9-7/8" L x 2-7/8" H x 1" D; (250 L x 51 H x 26 D mm)

**Armature** 7-5/16" L x 1-1/2" H x 1/2" D; (186L x 38H x 13D mm)

**Electrical**

**Circuitry & Wiring** PC board with voltage and current spike protection, instant release anti-residual magnetism circuit, terminal block for power input and status outputs

**Circuitry** Voltage and current spike protection and instant release anti-residual magnetism circuitry

**Voltage** 12/24VDC, field selectable

**Current** 500 mA @ 12VDC; 250 mA @ 24VDC

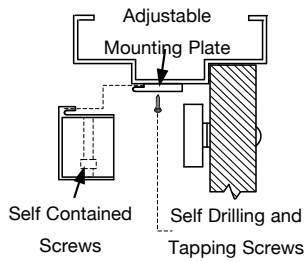
**Lock Status Contact** SPDT, 2 Amp @ 30VDC

**Door Status Contact** SPDT, 250 mA @ 30VDC

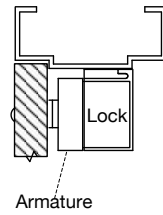
**Weight** 7.0 lbs



**QUICK MOUNT INTERLOCKING ASSEMBLY**




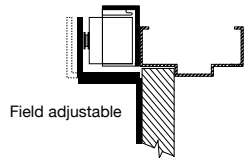
**OUTSWING**



**TOP JAMB MOUNTING KIT FOR INSWING DOORS**



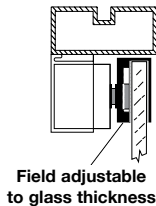
 **MODELS**  
**E12Z** Top jamb kit for E1200  
**E6Z** Top jamb kit for E600



**GLASS DOOR ARMATURE MOUNTING KIT**




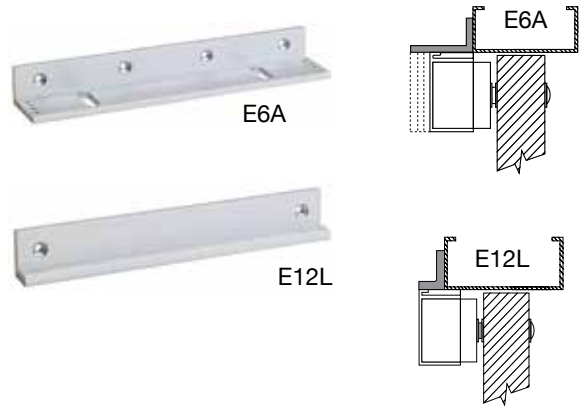
 **MODELS**  
**E12U** Glass door kit for E1200  
**E6U** Glass door kit for E600



**E SERIES ANGLE BRACKETS**


Used for the extension of a narrow frame header mounting surface, the bracket provides additional surface area for proper lock mounting

 **MODELS**  
**E6A** E600 adjustable angle bracket.  
 9-7/8" L x 1-1/4" W x 2-1/4" D  
**E12L** E1200 angle bracket.  
 May be field cut for use with E600  
 10-1/2" L x 1-1/2" H x 3/4" D



**E SERIES STOP FILLER PLATES**

Used where the frame stop does not provide enough mounting surface, the filler bar provides enough additional surface area for proper lock mounting.

 **MODELS**  
**E12F01** E1200 stop filler plates.  
 E600: Field cut for E600  
 Inches: 5/8" H x 3/4" D x 10-1/2" L  
**E12F02** E1200 stop filler plates.  
 E600: Field cut for E600  
 Inches: 3/4" H x 3/4" D x 10-1/2" L

