



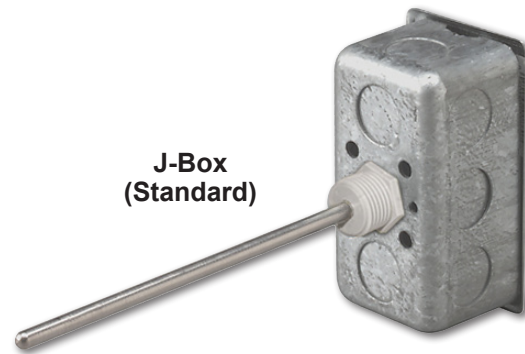
Features & Options

- Probe Lengths: 2", 4" & 8" (fit standard BAPI Thermowell lengths)
- Series 304 Stainless Steel Probes and three Enclosure Styles
- Double Encapsulated Sensors & Etched Teflon Leadwires

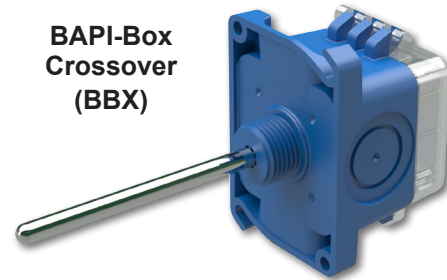
Immersion Units are available in 2", 4" and 8" probe lengths. The sensor is potted inside a 1/4" stainless steel probe with thermally conductive compound.

All Immersion Units have etched Teflon leadwires and double encapsulated sensors to create a watertight package that can withstand high humidity and condensation.

Immersion Units come standard with a 2"x4" steel J-Box but are also available with the metal Weatherproof enclosure or the new BAPI-Box Crossover enclosure.



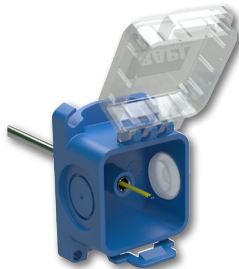
J-Box
(Standard)



BAPI-Box
Crossover
(BBX)

The BAPI-Box Crossover

The new BAPI-Box Crossover enclosure features a hinged cover with thumb latch for easy termination. A pierceable knockout plug is available for the open port. See the Accessories section for more info.



(Shown with knockout plug sold separately.)

BAPI Thermowells

Immersion Unit Probes are designed to be inserted into a Thermowell. For more info on Thermowells, see page A40.



Specifications

Environmental Operation Range:

Temperature:

BAPI-Box Crossover: -40 to 85 °C

Other Enclosures: -40 to 100 °C

Humidity: 0 to 100%, non-condensing

Sensing Element:

Thermistor or RTD (See Sensors Section for Specs.)

Probe Material:

Stainless Steel, 1/4" diameter

Enclosure Material:

Junction Box: Galvanized Steel

BAPI-Box Crossover:

UV-resistant polycarbonate, UL94, V-0

Enclosure Rating:

Junction Box: IP20, NEMA 1

BAPI-Box Crossover (BBX):

IP10, NEMA 1

IP44 with knockout plug in open port

Encl. Dimensions: H x W x D

BAPI-Box Crossover:

3.1 x 2.2 x 1.9" (79 x 56 x 49mm)

Junction Box

4.2 x 3.9 x 1.94" (106 x 98.4 x 49mm)

(For enclosure dimension drawings, see the end of the section.)



Use the Option Selection Guide below to create your custom part number. Replace the number and parenthesis with the designator for each selection. Skip the designator and dashes for optional selections that are not required in your configuration.



Immersion Sensor Option Selection Guide

BA/ (#1) - (#2) - (#3) - (#4)

#1: Temperature Sensor (required)

- 1.8K 1.8K Thermistor
- 3K 3K Thermistor
- 10K-2 10K-2 Thermistor
- 10K-3 10K-3 Thermistor
- 10K-3[11K] 10K-3[11K] Thermistor
- 20K 20K Thermistor
- 1K[375] 1K Platinum RTD (375 curve)
- 1K[NI] 1K Ω Nickel RTD
- 1K 1K Platinum RTD (385 curve)

Transmitters below require a BAPI-Box Crossover Enclosure

- T1K[32 TO 212F] 1K Plat. RTD Transmitter, 4 to 20 mA Output, 32 to 212°F Range
- T1K[20 TO 120F] 1K Plat. RTD Transmitter, 4 to 20 mA Output, 20 to 120°F Range
- T1K[0 TO 100F] 1K Plat. RTD Transmitter, 4 to 20 mA Output, 0 to 100°F Range
- T1K[0 TO 100C] 1K Plat. RTD Transmitter, 4 to 20 mA Output, 0 to 100°C Range
- T1K[-7 TO 49C] 1K Plat. RTD Transmitter, 4 to 20 mA Output, -7 to 49°C Range
- T1K[-18 TO 38C] 1K Plat. RTD Transmitter, 4 to 20 mA Output, -18 to 38°C Range

Matched Transmitters are also available. Contact your BAPI representative for ordering.

#2: Probe Type and Length (required)

- I-2" Immersion, 2" (51mm) length
- I-4" Immersion, 4" (102mm) length
- I-8" Immersion, 8" (203mm) length

#3: Enclosure and Lead Length (optional, comes standard with Junction Box)

- BBX BAPI-Box Crossover (IP10, NEMA 1)

#4: Test & Balance or Terminal Strip (optional, requires a BAPI-Box Crossover Enclosure)

- TB Test & Balance Switch
- TS Terminal Strip Connection

Additional options are available for these units but not shown in this Selection Guide. Contact your BAPI representative for the complete list of options. Submittal sheets without List Prices can be downloaded from our website at www.bapihvac.com

Example Number: BA/ (**10K-2**) - (**I-2"**) - (**BBX**) - ()

Actual Number (with parenthesis removed): BA/10K-2-I-2"-BBX

Description: 10K-2 Thermistor, Immersion Sensor, BAPI-Box Crossover, No Test and Balance or Terminal Strip.

Your Number: BA/

