



FREEZE STATS

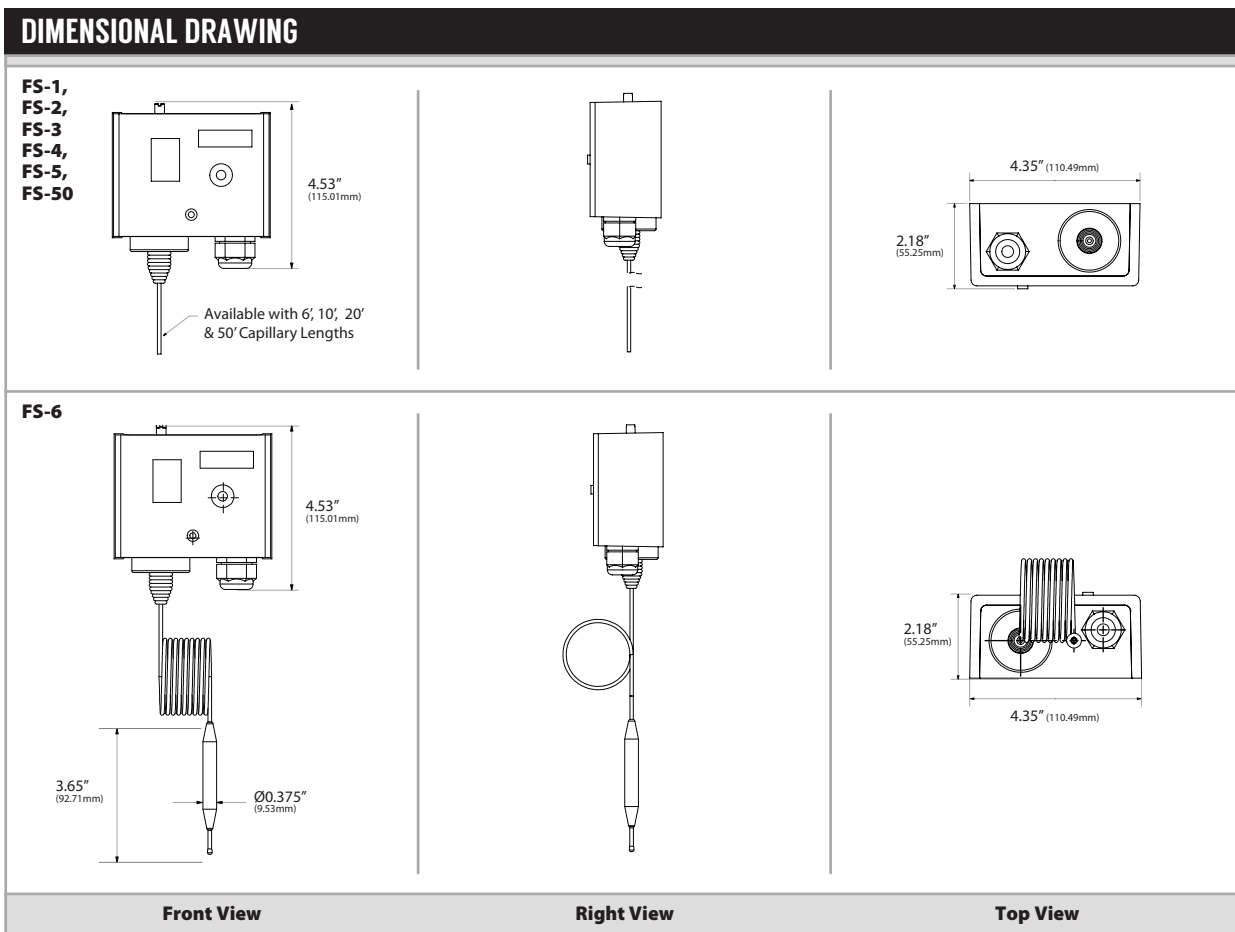
Manual & Automatic with Relay(s)

The FS Series are low limit controllers, also known as "Freeze Stats". These devices were designed for use on HVAC equipment that require low-temperature cutout protection to prevent cooling coils from freezing. They should be mounted between the heating and cooling coils on the supply side of the fan unit and respond to the lowest temperature sensed along any one foot section of the sensing element. The FS Series has manual and automatic reset versions, as well as, models that feature one or two sets of SPDT contacts. Numerous capillary lengths are also available.

The ACI Freeze Stat is covered by ACI's Two (2) Year Limited Warranty. The warranty can be found in the front of ACI's Sensors & Transmitters catalog, as well as on ACI's website, www.workaci.com.

PRODUCT SPECIFICATIONS

| | |
|--------------------------------------------------|------------------------------------------------------------------------------------|
| Thermostat Type: | Self-contained, electromechanical |
| Sensing Element: | Vapor-filled capillary |
| Sensing Media: | Temperature in air |
| Sensing Temperature Operating Range: | 14°F to 54°F (-10°C to 12°C) |
| Sensing Capillary Overload Temperature: | 392°F (200°C), maximum 60 minutes |
| Sensing Response: | To lowest temperature sensed by any 1 ft section of the capillary element |
| Sensing Capillary Material: | Copper |
| Sensing Capillary Installation: | Duct and across coil mounted |
| Sensing Capillary Length: | See Ordering Grid on Back of Data Sheet |
| Sensing Capillary Diameter: | Ø 0.08 in. (2 mm) (6' Length models have a larger bulb at the end) |
| Type of Control: | ON/OFF, low-level single-stage or cut-out control, with One (1) microswitch output |
| Low-Level Setpoint (Factory Set): | At 39°F (4°C), and safety-lock secured |
| Low-Level Setpoint Visual Range: | 14°F to 54°F |
| Low-Level Setpoint Adjustment: | Over full operating range, via screwdriver slot |
| Contact Form: | Form 1C (SPDT Contact) |
| # of Relays: | See Ordering Grid on Back of Data Sheet |
| Maximum Contact Switching Voltage: | 250 VAC |
| Maximum Contact Switching Current: | 15 (8) A |
| Switching Differential: | 1.8°F (1°K), auto- or manual reset |
| Enclosure Operating Temperature Range: | 14°F to 131°F (-10°C to 55°C) |
| Operating Humidity Range: | 0 to 95% RH, non-condensing |
| Storage Temperature Range: | 14°F to 158°F (-10°C to 70°C) |
| Enclosure Base Material: | Steel, galvanized |
| Enclosure Cover Material: | ABS, fire retardant |
| Enclosure Color: | Silver / Light Gray |
| Enclosure NEMA Rating: | NEMA 1 (IP40) |
| Cable Entry: | One (1) M20 compression fitting, removable, hole fits 1/2 in. conduit connector |
| Wire Connections: | Terminal with wire-retaining screws |
| Maximum Wire Size: | 14 AWG (2.5 mm ²) |
| Agency Approvals: | CE |
| Product Weight: | 1.6 lbs (0.7 kg) |
| Enclosure Product Dimensions (L x W x H): | 4.1" (105 mm) x 3.3" (83 mm) x 2.1" (53 mm) |



STANDARD ORDERING

Model # Example: **FS-50A** -OR- **142962**

| Model # | Item # | Capillary Length | # of Relays | Contact Form | Reset |
|---------------|--------|------------------|-------------|------------------------|--------|
| FS-1 | 102482 | 20' (6m) | 1 | Form 1C (SPDT Contact) | Manual |
| FS-1A | 102483 | 20' (6m) | 1 | Form 1C (SPDT Contact) | Auto |
| FS-2 | 102484 | 20' (6m) | 2 | Form 1C (SPDT Contact) | Manual |
| FS-2A | 105904 | 20' (6m) | 2 | Form 1C (SPDT Contact) | Auto |
| FS-3 | 106291 | 10' (3m) | 1 | Form 1C (SPDT Contact) | Manual |
| FS-3A | 106292 | 10' (3m) | 1 | Form 1C (SPDT Contact) | Auto |
| FS-4 | 106293 | 10' (3m) | 2 | Form 1C (SPDT Contact) | Manual |
| FS-4A | 106294 | 10' (3m) | 2 | Form 1C (SPDT Contact) | Auto |
| FS-5 | 106295 | 6' (1.8m) | 1 | Form 1C (SPDT Contact) | Manual |
| FS-5A | 106296 | 6' (1.8m) | 1 | Form 1C (SPDT Contact) | Auto |
| FS-6 | 106297 | 6' (1.8m) | 2 | Form 1C (SPDT Contact) | Manual |
| FS-6A | 106298 | 6' (1.8m) | 2 | Form 1C (SPDT Contact) | Auto |
| FS-50 | 142963 | 50' (16m) | 2 | Form 1C (SPDT Contact) | Manual |
| FS-50A | 142962 | 50' (16m) | 2 | Form 1C (SPDT Contact) | Auto |

ACCESSORIES ORDERING

Model # Example: **DBZ-05** -OR- **108759**

| Model # | Item # | Description |
|---------------|--------|-------------------------------------|
| DBZ-05 | 108759 | Capillary Mounting Clips (Set of 6) |

