



### Application

The ZS-260 explosion-proof housing may be used with the GM, AM, AF, NF, LF, FSAF, FSNF, FSLF series actuators. This housing is not designed for direct coupling. UL and CSA; Class I, Division 1&2, Groups B, C, D, (NEMA 7), Class II, Division 1&2, Groups E, F and G, (NEMA 9), Class III, Hazardous (classified) Locations, outdoor application NEMA 4.

### Operation

The ZS-260 enclosure is designed so that the required actuator may be easily field mounted into the enclosure. The actuator is fastened on to the internal portion of the operating shaft and secured at the end with an anti-rotation strap. A crank-arm, such as the KH8, is mounted to the external portion of the operating shaft for connection to connection to the damper linkage. ZG-109 right angle, and ZG-110 standoff mounting brackets may be used (see back).

The ZS-260 is designed so that the operating shaft can be mounted on either the front or rear side of the housing.

### Accessories

|        |                              |
|--------|------------------------------|
| KH8    | Universal crankarm           |
| KG8    | Universal ball joint         |
| KG10   | Universal ball joint         |
| ZG-109 | Right angle mounting bracket |
| ZG-110 | Stand-off mounting bracket   |

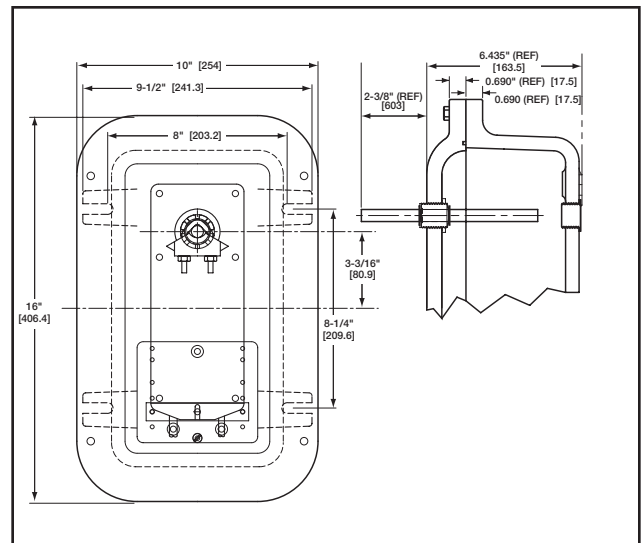
### Technical Data

|                          |  |
|--------------------------|--|
| Material                 | Housing: cast, copper-free, aluminum<br>Cover bolts: stainless steel<br>Operating shaft: stainless steel   |
| Conduit holes            | ¾"-14 NPT (2 supplied)<br>see Note 1   |
| Operating shaft diameter | 1/2 inch [12.7]  |
| Operating shaft location | Front or rear side of housing (field selected)   |
| Approved applications    | UL and CSA; Class I, Division 1&2, Groups B, C, D, (NEMA 7), Class II, Division 1&2, Groups E, F and G, (NEMA 9), Class III, Hazardous (classified) Locations, outdoor application NEMA 4. |
| Weight                   | 31.0 lb. (14.0 kg) without actuator  |

Note 1: Fittings that meet the requirements of the hazardous location must be used. All applications must comply with applicable local and/or national electric code.

Note: Since conditions of use of this product are outside the control of Belimo, the purchaser should determine suitability of the product for their intended use, and assumes all risk and liability in connection therewith.

### Dimensions (All ratings in brackets are metric.)



### ZS-260 Mounting Instructions

1. Determine proper operating shaft location.
2. Remove threaded plug from the hole in which the operating shaft will be mounted.
3. Install the anti-rotation strap, mounting plate, to the side of the housing where the operating shaft will be mounted.
4. From the inside surface of the housing, insert the operating shaft, short length first, into the mounting hole.
5. Hand tighten the shaft bushing into the housing until the star nut/seal is in contact with the face of the housing.
6. Using a screw driver blade, drive the star nut/seal clockwise until the bushing is locked into place.
7. Install the anti-rotation strap into the mounting plate at the designated holes for the actuator to be used.
8. Install actuator
9. Wire actuator (per electrical code).
10. Bolt housing together

### Typical ZG-109 Mounting

### Typical ZG-110 Mounting

#### Typical Mounting Sequence

Subject to change. © Belimo Aircontrols (USA), Inc.