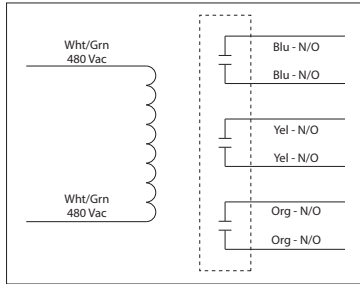


20 AMP POWER CONTROL RELAYS

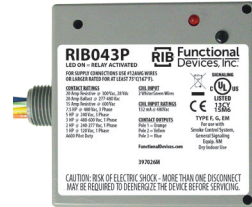
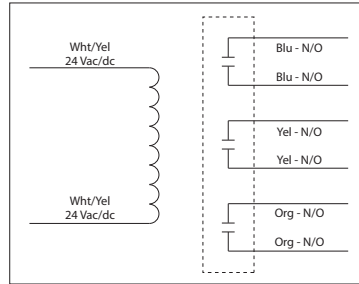
RIB043P

Power Relay, 20 Amp 3PST-N/O, 480 Vac Coil, NEMA 1 Housing



RIB243P

Power Relay, 20 Amp 3PST-N/O, 24 Vac/dc Coil, NEMA 1 Housing



SPECIFICATIONS

Relays & Contact Type: One (1) 3PST Continuous Duty Coil
Expected Relay Life: 10 million cycles minimum mechanical
Operating Temperature: -30 to 140° F
Humidity Range: 5 to 95% (noncondensing)
Operate Time: 20ms
Relay Status: LED On = Activated
Dimensions: 4.000" H x 4.000" W x 1.810" D with .50" NPT Nipple
Housing Detail: See **Housing C** in housing guide for dimensions
Origin: Made of US and non-US parts
Wires: 16", 600V Rated
Approvals: UL Listed, UL916, C-UL, CE, RoHS (Both Models)
 UL864, California State Fire Marshal (RIB043P)
Housing Rating: UL Accepted for Use in Plenum, NEMA 1
Gold Flash: No
Override Switch: No

Contact Ratings:
 20 Amp Resistive @ 300 Vac, 28 Vdc
 20 Amp Ballast @ 277-480 Vac
 Not rated for Electronic Ballast
 15 Amp Resistive @ 600 Vac
 770 VA Pilot Duty @ 120 Vac, 1 Phase
 1,158 VA Pilot Duty @ 240 Vac, 1 Phase
 1,110 VA Pilot Duty @ 277 Vac, 1 Phase
 1,640 VA Pilot Duty @ 480 Vac, 1 Phase
 1,466 VA Pilot Duty @ 240 Vac, 3 Phase
 2,112 VA Pilot Duty @ 480 Vac, 3 Phase
 Heavy Pilot Duty @ 600 Vac
 7.5 HP @ 480 Vac, 3 Phase
 5 HP @ 240 Vac, 3 Phase
 3 HP @ 480-600 Vac, 1 Phase
 2 HP @ 240-277 Vac, 1 Phase
 1 HP @ 120 Vac, 1 Phase

Coil Current:
 132 mA @ 480 Vac (RIB043P)
 210 mA @ 24 Vac (RIB243P)
 154 mA @ 30 Vdc (RIB243P)

Coil Voltage Input:
 RIB043P
 480 Vac ; 50-60 Hz
 Drop Out = 140 Vac
 Pull In = 340 Vac

RIB243P
 24 Vac/dc ; 50-60 Hz
 Drop Out = 3 Vac / 3.8 Vdc
 Pull In = 20 Vac / 22 Vdc

Notes:
 • Order Normally Closed by adding
 "-NC" to end of model number