

CONTROL VALVES

THREADED AND FLANGED GLOBE VALVES

VB SERIES



DESCRIPTION

The **Schneider Electric VB Series globe valves** are available in 1/2" to 2" threaded bronze body VB-7XXX models, or in 2 1/2" to 6" flanged cast iron body VB-8XXX models. The flanged valves have a patented balanced plug design. The balanced plug design allows water or steam to flow through the valve plug, equalizing the pressure on the top and bottom of the plug which greatly reduces the force required to operate and close these larger size valves. The **VB Series** valves are designed for control of chilled water, hot water, or steam in the HVAC industry and have a long history of high quality and reliability. They are available pre-assembled with electric or pneumatic actuators, or available without actuator for field assembly.

FEATURES

- *Low-profile body*
- *High quality, proven history of performance*
- *Self-adjusting packing design*
- *Wide temperature range 20° to 281°F (-7° to 138°C)*
- *Pneumatic or electric actuation choices*
- *Available pre-assembled or separately*
- *Two- and three-way body patterns*
- *Mixing and diverting 3-way body patterns*
- *Balanced plug design on flanged models*



VF-8213-596-5-12

3

CONTROL VALVES

SPECIFICATIONS		Materials Of Construction	
Size	1/2" to 2" FNPT, 2-1/2" to 6" flanged	1/2" to 2"	Bronze body/plug/seat, stainless steel stem and spring-loaded TFE packing;
Cv Range	0.4 to 40 (NPT bodies); 56 to 500 (flanged bodies)	2-1/2" to 6"	Cast iron body, bronze plug/seat, stainless steel stem and spring-loaded TFE/EPDM packing
Body Pattern	Two-way, three-way mixing or diverting	Media Compatibility	Hot or chilled water, steam (up to 35 psig (241 kPa)), glycol (up to 50%)
Rangeability	1/2" to 2": from 5:1 (Cv=0.4), up to 75:1 (Cv=40)	Media Temperature Range	20° to 281°F (-7° to 138°C)
2-1/2" to 6"	100:1	Action	Two-way stem up to close and stem up to open models; three-way mixing or diverting
Leakage Rating	ANSI Class IV, 0.01% of Cv	Actuator Mounting	Threaded mounting yoke
Maximum Closeoff Pressure	Actuator dependant, see Ordering Information	Compatible Actuators	Electric Forta Series or DuraDrive Series shown on following pages; pneumatic see MK Series in PNEUMATICS & FITTINGS catalog section.
Pressure Drop	35 psid (241 kPa) for water; 20 psid (138 kPa) for steam	Operating Temperature	Actuator dependant, refer to following pages for specifications
Pressure Rating	1/2" to 2": ANSI B16.15-1985, Class 250 (400 psi (2756 kPa) @ 20° to 150°F (-7° to 66°C), decreasing to 321 psi (2215 kPa) at 281°F (138°C));	Approvals	Actuator dependant, refer to following pages for specifications
2-1/2" to 6"	ANSI B16.1-1993, Class 125 (200 psi (1380 kPa) @ 20° to 150°F (-7° to 66°C), decreasing to 169 psi (1166 kPa) at 281°F (138°C))	Warranty	2 years
Flow Characteristic			
Two Way	Equal %		
Three Way	Linear		



CONTROL VALVES

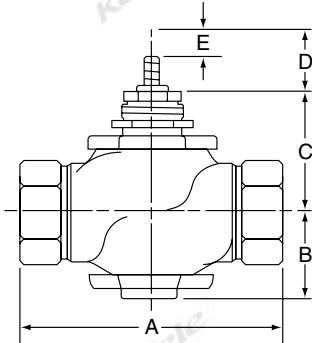
THREADED AND FLANGED GLOBE VALVES

VB SERIES

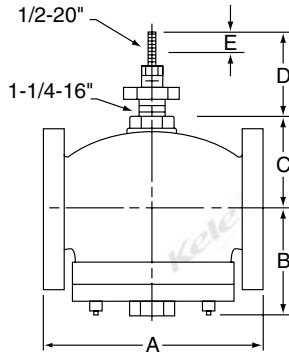
3

CONTROL VALVES

MODEL NUMBERS AND DIMENSIONS FOR VB-7000 AND VB-8000 SERIES VALVES WITHOUT ACTUATORS



Typical VB-7000 Threaded Valve



Typical VB-8000 Flanged Valve

Note: Actuator dimensions are listed on the DuraDrive Series pages

Part Number	Valve Size	Pattern	Cv Rating	Stem Position	Dimensions in inches (mm)					Weight (lbs)
					A	B	C	D (Stem Down)	E* (Stem Down)	
VB-7213-0-4-01	1/2"	2-way	0.4	SUTO	3-1/16 (78)	1-1/16 (27)	1-11/16 (43)	3/4 (19)	7/16 (11)	2.0
VB-7213-0-4-02			1.3							
VB-7213-0-4-03			2.2							
VB-7213-0-4-04			4.4							
VB-7213-0-4-05	3/4"	2-way	5.5	SUTO	3-5/8 (92)	1-1/8 (29)	2-3/8 (60)	3/4 (19)	7/16 (11)	3.0
VB-7213-0-4-06			7.5							
VB-7213-0-4-07	1"	2-way	10	SUTO	4-5/8 (118)	1-3/8 (35)	2-3/8 (60)	3/4 (19)	7/16 (11)	5.5
VB-7213-0-4-08			14							
VB-7213-0-4-09	1-1/4"	2-way	20	SUTO	5-3/8 (137)	1-3/8 (35)	2-7/16 (57)	3/4 (19)	7/16 (11)	6.0
VB-7213-0-4-10	1-1/2"	2-way	28	SUTO	5-3/8 (137)	1-1/2 (38)	2-7/16 (57)	3/4 (19)	7/16 (11)	13
VB-7213-0-4-11	2"	2-way	40	SUTO	6-1/8 (156)	1-9/16 (40)	2-3/4 (70)	3/4 (19)	7/16 (11)	13

VB-7223-0-4-01	1/2"	2-way	0.4	SUTC	3-1/16 (78)	1-1/4 (32)	1-11/16 (43)	1-1/8 (29)	7/16 (11)	2.0
VB-7223-0-4-02			1.3							
VB-7223-0-4-03			2.2							
VB-7223-0-4-04			4.4							
VB-7223-0-4-05	3/4"	2-way	5.5	SUTC	3-5/8 (92)	1-1/8 (29)	1-3/4 (45)	1-1/8 (29)	7/16 (11)	3.0
VB-7223-0-4-06			7.5							
VB-7223-0-4-07	1"	2-way	10	SUTC	4-5/8 (118)	1-3/4 (45)	2 (51)	1-1/8 (29)	7/16 (11)	5.5
VB-7223-0-4-08			14							
VB-7223-0-4-09	1-1/4"	2-way	20	SUTC	5-3/8 (137)	1-13/16 (46)	2-1/8 (54)	1-1/8 (29)	7/16 (11)	6.0
VB-7223-0-4-10	1-1/2"	2-way	28	SUTC	5-3/8 (137)	1-13/16 (46)	2-1/8 (54)	1-1/8 (29)	7/16 (11)	13
VB-7223-0-4-11	2"	2-way	40	SUTC	6-1/8 (156)	2-1/16 (53)	2-3/16 (56)	1-1/8 (29)	7/16 (11)	13

VB-7313-0-4-02	1/2"	3-way	2.2	MIXING*	3-1/16 (78)	1-3/8 (35)	1-11/16 (43)	3/4 (19)	7/16 (11)	2.0
VB-7313-0-4-04	4.4									
VB-7313-0-4-06	3/4"	3-way	7.5	MIXING*	3-5/8 (92)	1-11/16 (43)	1-11/16 (43)	3/4 (19)	7/16 (11)	3.0
VB-7313-0-4-08	1"	3-way	14	MIXING*	4-5/8 (118)	1-9/16 (40)	1-3/4 (45)	3/4 (19)	7/16 (11)	5.0
VB-7313-0-4-09	1-1/4"	3-way	20	MIXING*	5-3/8 (137)	1-5/8 (41)	2 (51)	3/4 (19)	7/16 (11)	5.5
VB-7313-0-4-10	1-1/2"	3-way	28	MIXING*	5-3/8 (137)	1-9/16 (40)	1-1/8 (29)	3/4 (19)	7/16 (11)	14
VB-7313-0-4-11	2"	3-way	41	MIXING*	6-1/8 (156)	1-7/8 (53)	1-3/16 (30)	3/4 (19)	7/16 (11)	14

VB-7323-0-4-04	1/2"	3-way	4.4	DIVERTING*	3-1/16 (78)	1-3/8 (53)	1-11/16 (43)	3/4 (19)	7/16 (11)	2.0
VB-7323-0-4-06	3/4"	3-way	7.5							
VB-7323-0-4-08	1"	3-way	15	DIVERTING*	4-5/8 (118)	1-9/16 (40)	1-3/4 (45)	3/4 (19)	7/16 (11)	5.0
VB-7323-0-4-09	1-1/4"	3-way	20	DIVERTING*	5-3/8 (137)	1-5/8 (41)	2 (51)	3/4 (19)	7/16 (11)	5.5
VB-7323-0-4-10	1-1/2"	3-way	28	DIVERTING*	5-3/8 (137)	1-9/16 (40)	1-1/8 (29)	3/4 (19)	7/16 (11)	14
VB-7323-0-4-11	2"	3-way	40	DIVERTING*	6-1/8 (156)	1-7/8 (53)	1-3/16 (30)	3/4 (19)	7/16 (11)	14

VB-8213-0-5-12	2-1/2"	2-way	56	SUTO	8-9/16 (217)	4 (102)	4-1/8 (105)	3-1/4 (83)	1 (25)	46
VB-8213-0-5-13	3"	2-way	85	SUTO	9-1/2 (241)	4-5/8 (117)	4-3/8 (111)			58
VB-8213-0-5-14	4"	2-way	145	SUTO	11-1/2 (292)	5-1/2 (140)	5-1/16 (129)	3-1/4 (83)	1 (25)	95
VB-8213-0-5-15	5"	2-way	240	SUTO	13 (330)	6-15/16 (176)	5-9/16 (141)	3-1/4 (83)	1 (25)	141
VB-8213-0-5-16	6"	2-way	370	SUTO	14 (356)	7-1/2 (190)	6-3/8 (162)	3-1/4 (83)	1 (25)	146

VB-8223-0-5-12	2-1/2"	2-way	56	SUTC	8-9/16 (217)	4 (102)	4-1/4 (108)	3-1/4 (83)	1 (25)	46
VB-8223-0-5-13	3"	2-way	85	SUTC	9-1/2 (241)	4-1/4 (108)	4-7/8 (124)			58
VB-8223-0-5-14	4"	2-way	145	SUTC	11-1/2 (292)	4-15/16 (125)	5-3/4 (146)	3-1/4 (83)	1 (25)	95
VB-8223-0-5-15	5"	2-way	240	SUTC	13 (330)	5-7/16 (138)	6-3/4 (172)	3-1/4 (83)	1 (25)	141
VB-8223-0-5-16	6"	2-way	370	SUTC	14 (356)	6-1/4 (159)	7-1/2 (191)	3-1/4 (83)	1 (25)	146

VB-8303-0-5-12	2-1/2"	3-way	80 ¹ 95 ² 115 ³	MIX. & DIV.*	8-9/16 (217)	5-7/16 (138)	4-3/16 (106)	3-1/4 (83)	1 (25)	55
VB-8303-0-5-13	3"	3-way	110 ¹ 120 ^{2,3}	MIX. & DIV.*	9-1/2 (241)	6-3/8 (162)	4-3/8 (111)			68
VB-8303-0-5-14	4"	3-way	190	MIX. & DIV.*	11-1/2 (292)	8-7/16 (214)	5-1/16 (129)	3-1/4 (83)	1 (25)	113
VB-8303-0-5-15	5"	3-way	290	MIX. & DIV.*	13 (330)	8-13/16 (224)	5-5/8 (143)	3-1/4 (83)	1 (25)	166
VB-8303-0-5-16	6"	3-way	500	MIX. & DIV.*	14 (356)	9-3/4 (248)	6-3/4 (171)	3-1/4 (83)	1 (25)	212

^a Stroke for rated flow. Add up to 1/16 inch (1.6mm) for disc seating and compression.

SUTO = Stem up to open, SUTC = Stem up to close

*See 3-way flow patterns on the next page

¹ Mixing Configuration, Flow from either A or B to AB

² Diverting Configuration, Flow AB to A

³ Diverting Configuration, Flow AB to B

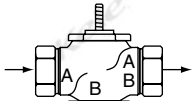
CONTROL VALVES

THREADED AND FLANGED GLOBE VALVES

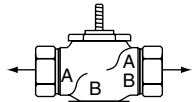
VB SERIES



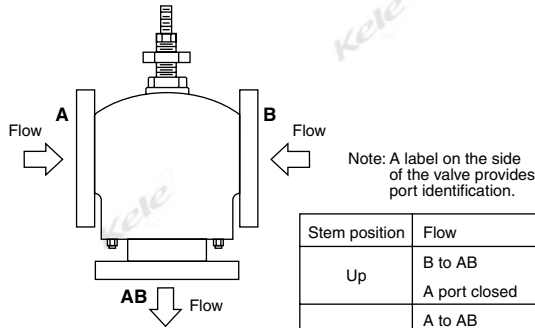
VALVE FLOW PATTERNS



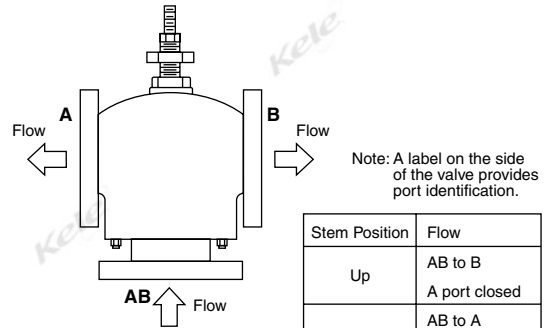
VB-7313
Mixing valve
(Stem up = B-AB)



VB-7323
Diverting valve
(Stem up = B-AB)



VB-8303 Piped as mixing valve

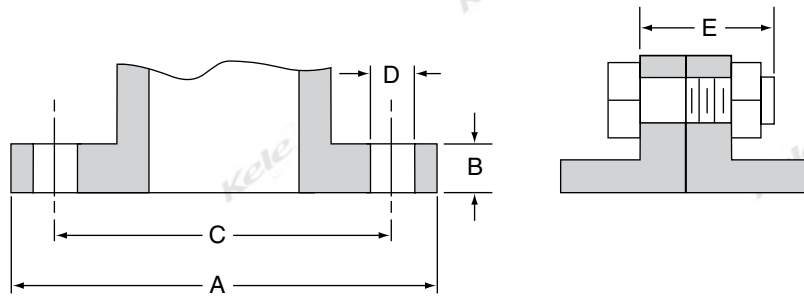


VB-8303 Piped as diverting valve

Three-way Flanged Valve Flow Patterns

Note: Two-way VB-7213 and VB-8213 valves are stem up to open (SUTO).
VB-7223 and VB-8223 are stem up to close (SUTC).

FLANGE DIMENSIONS



Flange Dimensions

Flange Detail for American Standard 125 psi Cast Iron Pipe Flanges

Nominal Pipe Size	Flanges		Drilling		Bolting		Length of Machine Bolts E
	Flange Diameter A	Flange Thickness B	Diameter of Bolt Circle C	Diameter of Bolt Holes D	Number of Bolts	Diameter of Bolts	
2-1/2"	7"	11/16"	5-1/2"	3/4"	4	5/8"	2-1/2"
3"	7-1/2"	3/4"	6"				
4"	9"	15/16"	7-1/2"	7/8"	8	3/4"	3"
5"	10"		8-1/2"				
6"	11"	1"	9-1/2"				



CONTROL VALVES

THREADED AND FLANGED GLOBE VALVES VB SERIES

3

CONTROL VALVES

ORDERING INFORMATION

TWO-WAY ELECTRIC VALVE ASSEMBLIES - ORDERING INFORMATION SUTO = Stem Up To Open, SUTC = Stem Up To Close													
Model Number	Size	Cv	Pattern	Fail	Control	Actuator	Linkage	Closeoff					
VF-7213-255-4-01	1/2" NPT	0.4	Two-way SUTO	Non-spring return	Floating (24 VAC)	MF-22303	None	130					
VF-7213-255-4-02	1/2" NPT	1.3						80					
VF-7213-255-4-03	1/2" NPT	2.2											
VF-7213-255-4-04	1/2" NPT	4.4											
VF-7213-255-4-05	3/4" NPT	5.5											
VF-7213-255-4-06	3/4" NPT	7.5											
VA-7213-804-4-01	1/2" NPT	0.4	Two-way SUTO	Spring return N.O.	Two-position (24 VAC)	MA51-7103-100	None	250					
VA-7213-804-4-02	1/2" NPT	1.3						250					
VA-7213-804-4-03	1/2" NPT	2.2						250					
VA-7213-804-4-04	1/2" NPT	4.4						250					
VA-7213-804-4-05	3/4" NPT	5.5						200					
VA-7213-804-4-06	3/4" NPT	7.5						200					
VA-7213-804-4-07	1" NPT	10						150					
VA-7213-804-4-08	1" NPT	14						150					
VA-7213-593-4-09	1-1/4" NPT	20						150					
VA-7213-593-4-10	1-1/2" NPT	28						100					
VA-7213-593-4-11	2" NPT	40				65							
VA-8213-596-5-12	2-1/2" Flanged	56				MA61-7203	125						
VA-8213-596-5-13	3" Flanged	85											
VA-8213-596-5-14	4" Flanged	145											
VA-8213-596-5-15	5" Flanged	240											
VA-8213-556-5-16	6" Flanged	370											
VA-7223-804-4-01	1/2" NPT	0.4						Two-way SUTC	Spring return N.C.	Two-position (24 VAC)	MA51-7103-100	None	250
VA-7223-804-4-02	1/2" NPT	1.3											250
VA-7223-804-4-03	1/2" NPT	2.2											250
VA-7223-804-4-04	1/2" NPT	4.4				250							
VA-7223-804-4-05	3/4" NPT	5.5	200										
VA-7223-804-4-06	3/4" NPT	7.5	200										
VA-7223-804-4-07	1" NPT	10	90										
VA-7223-804-4-08	1" NPT	14	90										
VA-7223-593-4-09	1-1/4" NPT	20	150										
VA-7223-593-4-10	1-1/2" NPT	28	100										
VA-7223-593-4-11	2" NPT	40	65										
VA-8223-596-5-12	2-1/2" Flanged	56	MA61-7203	125									
VA-8223-596-5-13	3" Flanged	85											
VA-8223-596-5-14	4" Flanged	145											
VA-8223-596-5-15	5" Flanged	240											
VA-8223-556-5-16	6" Flanged	370											
VA-41-7153	AV-609												
VF-7213-804-4-01	1/2" NPT	0.4	Two-way SUTO	Spring return N.O.	Floating (24 VAC)	MF51-7103-100	None				250		
VF-7213-804-4-02	1/2" NPT	1.3									250		
VF-7213-804-4-03	1/2" NPT	2.2									250		
VF-7213-804-4-04	1/2" NPT	4.4						250					
VF-7213-804-4-05	3/4" NPT	5.5						200					
VF-7213-804-4-06	3/4" NPT	7.5						200					
VF-7213-804-4-07	1" NPT	10						150					
VF-7213-804-4-08	1" NPT	14						150					
VF-7213-593-4-09	1-1/4" NPT	20						150					
VF-7213-593-4-10	1-1/2" NPT	28						100					
VF-7213-593-4-11	2" NPT	40				65							
VF-8213-596-5-12	2-1/2" Flanged	56				MF61-7203	125						
VF-8213-596-5-13	3" Flanged	85											
VF-8213-596-5-14	4" Flanged	145											
VF-8213-596-5-15	5" Flanged	240											
VF-8213-556-5-16	6" Flanged	370											
VF-41-7153	AV-609												
VU-7213-674-4-02	1/2" NPT	2.2				Two-way SUTO	Non-Spring Return	Programmable Floating/Proportional	M400A	AV-821	250		
VU-7213-674-4-04	1/2" NPT	4.4									250		
VU-7213-674-4-06	3/4" NPT	7.5									250		
VU-7213-680-4-08	1" NPT	14	207										
VU-7213-680-4-09	1-1/4" NPT	20	130										
VU-7213-680-4-10	1-1/2" NPT	28	88										
VU-7213-680-4-11	2" NPT	40	48										
VU-8213-686-5-12	2-1/2" Flanged	56	Two-way SUTO						M1500A	AV-821	125		
VU-8213-686-5-13	3" Flanged	85											
VU-8213-686-5-14	4" Flanged	145											
VU-8213-686-5-15	5" Flanged	240											
VU-8213-686-5-16	6" Flanged	370											

CONTROL VALVES

THREADED AND FLANGED GLOBE VALVES

VB SERIES



ORDERING INFORMATION

TWO-WAY ELECTRIC VALVE ASSEMBLIES - ORDERING INFORMATION (continued)									SUTO = Stem Up To Open, SUTC = Stem Up To Close						
Model Number	Size	Cv	Pattern	Fail	Control	Actuator*	Linkage	Closeoff							
VF-7223-804-4-01	1/2" NPT	0.4	Two-way SUTC	Spring return N.C.	Floating (24 VAC)	MF51-7103-100	None	250							
VF-7223-804-4-02	1/2" NPT	1.3						250							
VF-7223-804-4-03	1/2" NPT	2.2						250							
VF-7223-804-4-04	1/2" NPT	4.4						250							
VF-7223-804-4-05	3/4" NPT	5.5						200							
VF-7223-804-4-06	3/4" NPT	7.5						200							
VF-7223-804-4-07	1" NPT	10						90							
VF-7223-804-4-08	1" NPT	14						90							
VF-7223-593-4-09	1-1/4" NPT	20						150							
VF-7223-593-4-10	1-1/2" NPT	28						100							
VF-7223-593-4-11	2" NPT	40						65							
VF-8223-596-5-12	2-1/2" Flanged	56						125							
VF-8223-596-5-13	3" Flanged	85													
VF-8223-596-5-14	4" Flanged	145													
VF-8223-596-5-15	5" Flanged	240													
VF-8223-556-5-16	6" Flanged	370													
										MF41-7153	AV-609				
VS-7213-814-4-01	1/2" NPT	0.4						Two-way SUTO	Spring return N.O.	Proportional (24 VAC, 4-20 mA)	MS51-7103-160	None	250		
VS-7213-814-4-02	1/2" NPT	1.3											250		
VS-7213-814-4-03	1/2" NPT	2.2	250												
VS-7213-814-4-04	1/2" NPT	4.4	250												
VS-7213-814-4-05	3/4" NPT	5.5	200												
VS-7213-814-4-06	3/4" NPT	7.5	200												
VS-7213-814-4-07	1" NPT	10	150												
VS-7213-814-4-08	1" NPT	14	150												
VS-7213-593-4-09	1-1/4" NPT	20	150												
VS-7213-593-4-10	1-1/2" NPT	28	100												
VS-7213-593-4-11	2" NPT	40	65												
VS-8213-596-5-12	2-1/2" Flanged	56	125												
VS-8213-596-5-13	3" Flanged	85													
VS-8213-596-5-14	4" Flanged	145													
VS-8213-596-5-15	5" Flanged	240													
VS-8213-556-5-16	6" Flanged	370													
					MS41-7153	AV-609									
VS-7223-814-4-01	1/2" NPT	0.4	Two-way SUTC	Spring return N.C.	Proportional (24 VAC, 4-20 mA)	MS51-7103-160	None			250					
VS-7223-814-4-02	1/2" NPT	1.3								250					
VS-7223-814-4-03	1/2" NPT	2.2						250							
VS-7223-814-4-04	1/2" NPT	4.4						250							
VS-7223-814-4-05	3/4" NPT	5.5						200							
VS-7223-814-4-06	3/4" NPT	7.5						200							
VS-7223-814-4-07	1" NPT	10						90							
VS-7223-814-4-08	1" NPT	14						90							
VS-7223-593-4-09	1-1/4" NPT	20						150							
VS-7223-593-4-10	1-1/2" NPT	28			100										
VS-7223-593-4-11	2" NPT	40			65										
VS-8223-596-5-12	2-1/2" Flanged	56			125										
VS-8223-596-5-13	3" Flanged	85													
VS-8223-596-5-14	4" Flanged	145													
VS-8223-596-5-15	5" Flanged	240													
VS-8223-556-5-16	6" Flanged	370													
							MS41-7153	AV-609							

THREE-WAY ELECTRIC VALVE ASSEMBLIES - ORDERING INFORMATION										
Model Number	Size	Cv	Pattern	Fail	Control	Actuator*	Linkage	Closeoff		
VF-7313-255-4-02	1/2" NPT	1.3	Three-way Mixing	Non-spring return	Floating (24 VAC)	MF-22303 Incl. two-position	None	130		
VF-7313-255-4-04	1/2" NPT	4.4						80		
VF-7313-255-4-06	3/4" NPT	7.5								
VA-7313-804-4-02	1/2" NPT	1.3	Three-way Mixing	Spring return B-AB	Two-position (24 VAC)	MA51-7103-100	None	250		
VA-7313-804-4-04	1/2" NPT	4.4						250		
VA-7313-804-4-06	3/4" NPT	7.5						200		
VA-7313-804-4-08	1" NPT	14						90		
VA-7313-593-4-09	1-1/4" NPT	20						150		
VA-7313-593-4-10	1-1/2" NPT	28						100		
VA-7313-593-4-11	2" NPT	40	65							
VU-7313-674-4-02	1/2" NPT	2.2	Mixing	Non-Spring Return	Programmable Floating/Proportional	M400A	AV-821	250		
VU-7313-674-4-04	1/2" NPT	4.4						250		
VU-7313-674-4-06	3/4" NPT	7.5						198		
VU-7313-674-4-08	1" NPT	14						207		
VU-7313-680-4-09	1-1/4" NPT	20						130		
VU-7313-680-4-10	1-1/2" NPT	28						88		
VU-7313-680-4-11	2" NPT	40	48							
VU-8303-686-5-12	2-1/2" Flanged	80	Three-way Mixing/Diverting			M1500A	AV-822	125		
VU-8303-686-5-13	3" Flanged	110								
VU-8303-686-5-14	4" Flanged	190								
VU-8303-686-5-15	5" Flanged	290								
VU-8303-686-5-16	6" Flanged	500								

* See Actuator page for wiring

3 CONTROL VALVES



CONTROL VALVES

THREADED AND FLANGED GLOBE VALVES VB SERIES

3

CONTROL VALVES

ORDERING INFORMATION

THREE-WAY ELECTRIC VALVE ASSEMBLIES - ORDERING INFORMATION (continued)											
Model Number	Size	Cv	Pattern	Fail	Control	Actuator*	Linkage	Closeoff			
VA-8303-596-5-12	2-1/2" Flanged	80	Three-way Mixing/Diverting	Spring return B-AB	Two-position (24 VAC)	MA61-7203	None	35			
VA-8303-596-5-13	3" Flanged	110									
VA-8303-596-5-14	4" Flanged	190									
VA-8303-596-5-15	5" Flanged	290									
VA-8303-556-5-16	6" Flanged	500									
									MA41-7153	AV-609	
VF-7313-804-4-02	1/2" NPT	1.3	Three-way Mixing	Spring return B-AB	Floating (24 VAC)	MF51-7103-100	None	250			
VF-7313-804-4-04	1/2" NPT	4.4						250			
VF-7313-804-4-06	3/4" NPT	7.5						200			
VF-7313-804-4-08	1" NPT	14						90			
VF-7313-593-4-09	1-1/4" NPT	20						150			
VF-7313-593-4-10	1-1/2" NPT	28				100					
VF-7313-593-4-11	2" NPT	40				65					
VF-8303-596-5-12	2-1/2" Flanged	80				Three-way Mixing/Diverting			MF61-7203	35	
VF-8303-596-5-13	3" Flanged	110									
VF-8303-596-5-14	4" Flanged	190									
VF-8303-596-5-15	5" Flanged	290									
VF-8303-556-5-16	6" Flanged	500									
					MF41-7153				AV-609		
VS-7313-814-4-02	1/2" NPT	1.3	Three-way Mixing	Spring return B-AB	Proportional 4-20 mA (PWR 24VAC)	MS51-7103-160	None	250			
VS-7313-814-4-04	1/2" NPT	4.4						250			
VS-7313-814-4-06	3/4" NPT	7.5						200			
VS-7313-814-4-08	1" NPT	14						90			
VS-7313-593-4-09	1-1/4" NPT	20						150			
VS-7313-593-4-10	1-1/2" NPT	28			100						
VS-7313-593-4-11	2" NPT	40			65						
VS-8303-596-5-12	2-1/2" Flanged	80			Three-way Mixing/Diverting		Proportional 4-20mA or 2-10 VDC (PWR 24VAC)	MS51-7203	35		
VS-8303-596-5-13	3" Flanged	110									
VS-8303-596-5-14	4" Flanged	190									
VS-8303-596-5-15	5" Flanged	290									
VS-8303-556-5-16	6" Flanged	500									
								MS61-7203			
					MS41-7153	AV-609					

TWO-WAY PNEUMATIC VALVE ASSEMBLIES - ORDERING INFORMATION									
Model Number	Size	Cv	Pattern	Fail	Control	Actuator**	Linkage	Closeoff	
VK4-7213-201-4-01	1/2" NPT	0.4	Two-way	Spring return N.O.	3-7 psi spring with positioner	MK-2690+AK-42309-500	AV-7400	220	
VK4-7213-201-4-02	1/2" NPT	1.3							
VK4-7213-201-4-03	1/2" NPT	2.2							
VK4-7213-201-4-04	1/2" NPT	4.4							
VK4-7213-201-4-05	3/4" NPT	5.5							
VK4-7213-201-4-06	3/4" NPT	7.5							
VK4-7213-301-4-07	1" NPT	10			3-6 psi spring with positioner	MK-4601+AK-42309-500	AV-401	150	
VK4-7213-301-4-08	1" NPT	14							
VK4-7213-301-4-09	1-1/4" NPT	20							
VK4-7213-611-4-10	1-1/2" NPT	28							
VK4-7213-611-4-11	2" NPT	40							
VK4-8213-602-5-12	2-1/2" Flanged	56							
VK4-8213-602-5-13	3" Flanged	85			5-10 psi spring with positioner	MK-6811+AK-42309-500	AV-497	125	
VK4-8213-602-5-14	4" Flanged	145							
VK4-8213-602-5-15	5" Flanged	240							
VK4-8213-652-5-16	6" Flanged	370							
								MK-6911+AK-42309-500	
VK4-7223-203-4-01	1/2" NPT	0.4	Two-way	Spring return N.C.	8-13 psi spring with positioner	MK-2690+AK-42309-500	AV-7400	130	
VK4-7223-203-4-02	1/2" NPT	1.3							
VK4-7223-203-4-03	1/2" NPT	2.2							
VK4-7223-203-4-04	1/2" NPT	4.4							
VK4-7223-203-4-05	3/4" NPT	5.5							
VK4-7223-203-4-06	3/4" NPT	7.5							
VK4-7223-303-4-07	1" NPT	10			10-13 psi spring with positioner	MK-4621+AK-42309-500	AV-401	60	
VK4-7223-303-4-08	1" NPT	14							
VK4-7223-303-4-09	1-1/4" NPT	20							
VK4-7223-613-4-10	1-1/2" NPT	28							
VK4-7223-613-4-11	2" NPT	40							
VK4-8223-602-5-12	2-1/2" Flanged	56							
VK4-8223-602-5-13	3" Flanged	85			5-10 psi spring with positioner	MK-6811+AK-42309-500	AV-497	125	
VK4-8223-602-5-14	4" Flanged	145							
VK4-8223-602-5-15	5" Flanged	240							
VK4-8223-652-5-16	6" Flanged	370							
								MK-6911+AK-42309-500	

THREE-WAY PNEUMATIC VALVE ASSEMBLIES - ORDERING INFORMATION									
Model Number	Size	Cv	Pattern	Fail	Control	Actuator**	Linkage	Closeoff	
VK4-7313-303-4-02	1/2" NPT	1.3	Three-way Mixing	Spring return B-AB	10-13 psi spring with positioner	MK-4621+AK-42309-500	AV-401	200	
VK4-7313-303-4-04	1/2" NPT	4.4							
VK4-7313-303-4-06	3/4" NPT	7.5							
VK4-7313-303-4-08	1" NPT	14							
VK4-7313-303-4-09	1-1/4" NPT	20							
VK4-7313-612-4-10	1-1/2" NPT	28							
VK4-7313-612-4-11	2" NPT	40	Three-way Mixing/Diverting		5-10 psi spring with positioner	MK-6811+AK-42309-500	80		
VK4-8303-602-5-12	2-1/2" Flanged	80							
VK4-8303-602-5-13	3" Flanged	110							
VK4-8303-602-5-14	4" Flanged	190							
VK4-8303-602-5-15	5" Flanged	290							
VK4-8303-652-5-16	6" Flanged	500							
						MK-6911+AK-42309-500	35		

* See Actuator page for wiring

** See Pneumatic Actuator page for Spec's and piping