



LIGHTING CONTROLS

WATTSTOPPER OCCUPANCY SENSOR

CI-200, CX-100



DESCRIPTION

The Wattstopper CX-100 wall-/corner-mount and CI-200 ceiling mount devices are full-featured passive infrared occupancy sensors that control lighting and HVAC equipment. Both units can control equipment directly through a power pack or through a BAS with the SPDT isolated relay built into the sensors. Both models have adjustable sensitivity and time delays.

FEATURES

- Advanced PIR technology
- Adjustable time delay
- Adjustable unit sensitivity
- Contains isolated relay for use with BAS and other control systems
- Fresnel lens with choice of 3 coverage patterns (CX-100)
- 360° coverage (CI-200)
- Light Sensor with Set Point to Output
- LED indicator
- 5-year warranty



CI-200



CX-100



OPERATION

Models CX-100 and CI-200 use advanced PIR technology to detect occupancy. Detection occurs when the units sense the difference between infrared emissions from a human body and the background space. They are powered by 24 VDC either from a power pack or separate 24 VDC power supply. Both units operate by sending a low-voltage signal to the power pack and energizing the SPDT relay when a person enters the controlled area. Both units have an adjustable time delay for turning the lights off when no occupancy is detected, and both have an adjustable sensitivity setting.

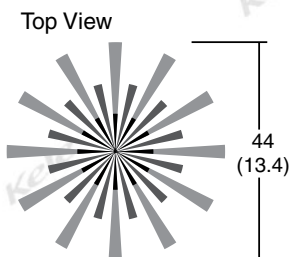
Each unit contains an adjustable light-level sensor for controlling lighting based on ambient light level. This feature is wired to an independent voltage output at set point and has no involvement with the occupancy relay output.

SPECIFICATIONS

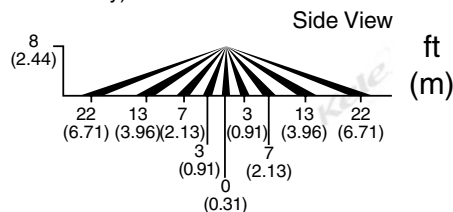
Supply Voltage	24 VDC @20 mA, ±10%	Sensitivity	
Output		CI-200	2 Dip switch settings Min or Max
Aux Output	Motion initiated (Int.) 24 VDC output	CX-100	POT Adjustment under cover
SPDT	Motion Int. contact, 24V (AC/DC) @ 1 A	Light SP	Adjustable 4–190 fc to initiate a 24VDC output
Light Output	Adjustable 4–190 fc to initiate a 24VDC output	Override	Dip switch (ON = Forced motion simulation)
Technology	Temperature compensated, Passive Infra-Red (PIR) w/ Fresnel lens	OFF Delay Time (TD)	DIP switches (15 seconds to 30 minutes)
Occupied Mode (Occ)	Occupied-Auto ON wTime Delay OFF	Indication	Red LED (ON w/ motion)
Approximate Coverage Pattern		Mounting	Ceiling or wall mount
	CI for ceiling mount, CX for Wall or ceiling mount	CI-200	Ceiling 2.75" to 3" hole
CI-200	360°, 8" ceiling/44" dia circle, 12" ceiling/74" dia circle	CX-100	Wall or ceiling w/90° swivel bracket
CI-200-1	360°, 8" ceiling/24" dia circle, 12" ceiling/34" dia circle	Color	White
CX-100	90°, 10" wall mnt./50" wedge	Operating Temperature	32° to 131°F (0° to 55°C)
CX-100-1	43°, 10" wall mnt./50"-90' wedge	Operating Humidity	10-95% RH non-condensing
CX-100-3	3°, 30" ceiling aisle way mnt./67" wedge, 3°, 15" ceiling aisle way mnt./33" wedge	Wiring	8 Pig tails
		Enclosure Rating	NEMA 1
		Dimensions	
		CI-200	3.3" dia x 2.2" deep (8.5 x 5.6 cm)
			Sensor Protrudes 0.4" from ceiling
		CX-100	3.3"W x 3.3"L x 2.1"D (8.4 x 8.4 x 5.3 cm)
		Weight	1.0 lb (0.46 Kg)
		Approvals	UL File #E101196
		Warranty	5 year



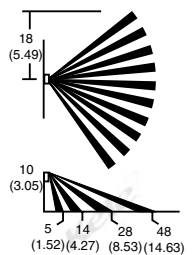
COVERAGE PATTERNS



Coverage shown is maximum and represents coverage for half-step walking motion. Under ideal conditions, with no barriers or obstacles, coverage can reach up to 1200 ft² for half-step walking motion and up to 500 ft² for hand motion (typical desktop level of activity).

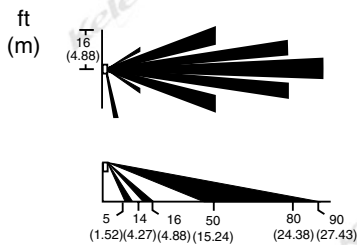


CI-200



Dense Wide Angle (Standard)

CX-100

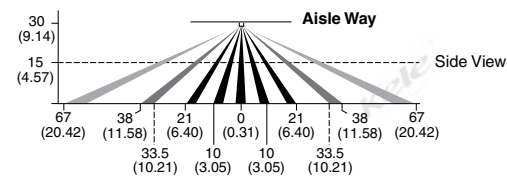


Long Range

CX-100-1



Top View



Aisle Way

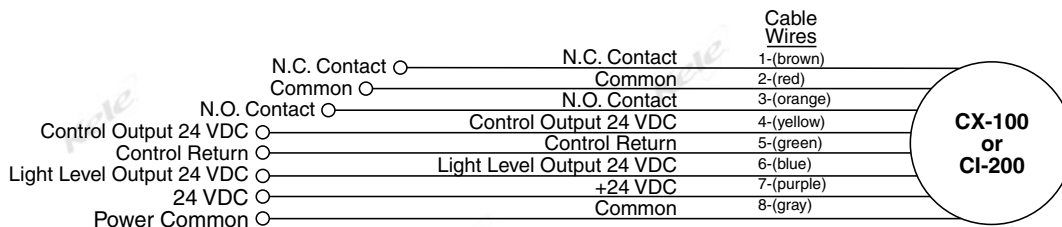
Side View

CX-100-3

Coverages shown are maximum and represent coverage for half-step walking motion. For building spaces with lower levels of activity or with obstacles and barriers, coverage size may vary.

CX-100

WIRING



Note: See power pack in this section for switching lighting loads or other line voltage loads
For Digital Input to BAS

ORDERING INFORMATION

MODEL	DESCRIPTION
CI-200	Ceiling-mount sensor
CI-200-1	Long-range sensor with mounting bracket
CX-100	Dense wide-angle sensor with swivel mounting bracket
CX-100-1	Long-range sensor with swivel mounting bracket
CX-100-3	Aisle-way sensor with swivel mounting bracket

	RELATED PRODUCTS
BZ-50	120-277 VAC to 24 VDC power pack with SPST Relay and 12-24VDC coil
DCP-1.5-W	Power supply, 24 VAC IN to 24 VDC OUT
DCPA-1.2	Power supply, 120 VAC In to 24 VAC/24 VDC Out
LMLS-MB1	Photo sensor mounting bracket J box for LMLS (400, 500)
S-120/277/347-E	Slave relay pack with SPST Relay and 12-24VDC coil