

TRANSDUCERS

ELECTRONIC / PNEUMATIC TRANSDUCER CP-8500 SERIES



DESCRIPTION

The Kele CP-8500 Series Electronic / Pneumatic Transducers handle a wide variety of pneumatic valve and damper applications that require a 3-15 psig control signal from an electronic controller output. The CP-8551 is a basic two-wire loop-powered unit with 4-20 mA input. The CP-8552 is a 3-wire unit with a jumper-selectable input for 4-20 mA, 6-9 VDC or 0-10 VDC. The CP-8511 has a variety of jumper-selectable inputs, a pressure gauge, manual override, and 20 VDC power output for auxiliary components.

FEATURES

- Panel or DIN-rail mount for quick snap-on installation
- High accuracy and low hysteresis for precise control
- Long-term, driftless operation with high repeatability for long life and high performance
- Low air consumption to save energy
- High airflow capacity to handle large pneumatic components and long tubing runs
- Models with field-selectable inputs
- Integral 20 VDC auxiliary power supply, pressure gauge and manual override on CP-8511



CP-8551



CP-8511-024



SPECIFICATIONS

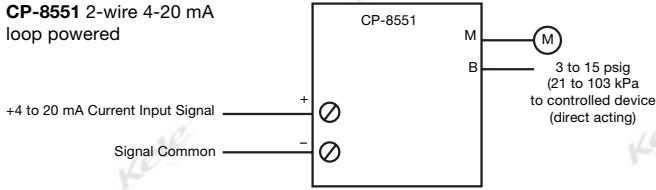
Supply Voltage CP-8551 CP-8552, -8511	None, 4-20 mA loop powered 20 to 30 VAC, 50/60 Hz or 24 to 30 VDC	Media Compatibility	Clean, dry air; 20 psig nominal supply pressure
Supply VA CP-8552 CP-8511	3.9 VA (CP-8552) 1.6 W maximum 3.8 W	Linearity Hysteresis Adjustments CP-8552	± 1% of span @ 75°F (24°C) 0.75% of span @ 75°F (24°C) Adjustable start point and span potentiometers for voltage input
Supply Watts CP-8552 CP-8511	3.9 VA (CP-8552) 1.6 W maximum 3.8 W	CP-8511 Manual Override	Field adjustable zero potentiometer Auto/manual switch enables output override using a manual output potentiometer, LED goes off when in Manual mode (CP-8511 only)
Input CP-8551 CP-8552 CP-8511	4-20 mA 4-20 mA, 0-10 VDC, 6-9 VDC, jumper selectable 4-20 mA, 1-5 mA, 6-9 VDC, 1-5 VDC, 0-10 VDC, 1-11 VDC, 2-10 VDC, jumper selectable	Feedback	Auto/manual feedback provided by isolated open collector output transistor (OC, OE) (CP-8511 only)
Input Impedance CP-8551 CP-8552 CP-8511	550Ω Ω 550Ω (current input); >10 kΩ (voltage input) 250Ω @ 4-20 mA; 1000Ω @ 1-5 mA; >10 kΩ for voltage inputs	Operating Temperature Operating Humidity Mounting Enclosure Rating Dimensions CP-8551, -8552 CP-8511	32° to 140°F (0° to 60°C) 5 to 95% RH, non-condensing Vertical, within 5° NEMA 1 4.6"H x 2.8"W x 2.6"D (11.8 x 7.1 x 6.8 cm) 4.6"H x 5.0"W x 2.6"D (11.8 x 12.7 x 6.8 cm)
Output Output Voltage	3-15 psig (21-103 kPa) 20 VDC auxiliary output (CP-8511 only), 50 mA maximum	Weight CP-8551, -8552 CP-8511	0.4 lb (0.2 kg) 0.8 lb (0.4 kg)
Wiring Terminations	Screw terminals for 16 to 22 AWG wire	Approvals	UL File #E9429; CSA, C22.2 No. 24-93; CE, EMC Directive 89/336/EEC, low voltage directive 72/23/EEC
Action CP-8551, -8552 CP-8511	Direct acting Direct or reverse acting, jumper selectable	Warranty	1 year
Air Capacity Air Connections Air Consumption	550 scim (150 ml/s) Barbed fittings for 1/4" OD tubing 0.012 scfm (5.66 ml/s) @ 20 psig (138 kPa) supply		
Maximum Pressure	30 psig (207 kPa) maximum		

TRANSDUCERS

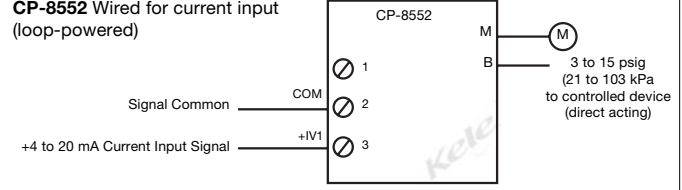
ELECTRONIC / PNEUMATIC TRANSDUCER CP-8500 SERIES

WIRING

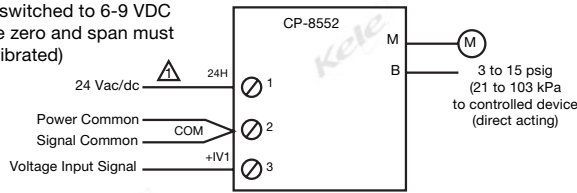
CP-8551 2-wire 4-20 mA loop powered



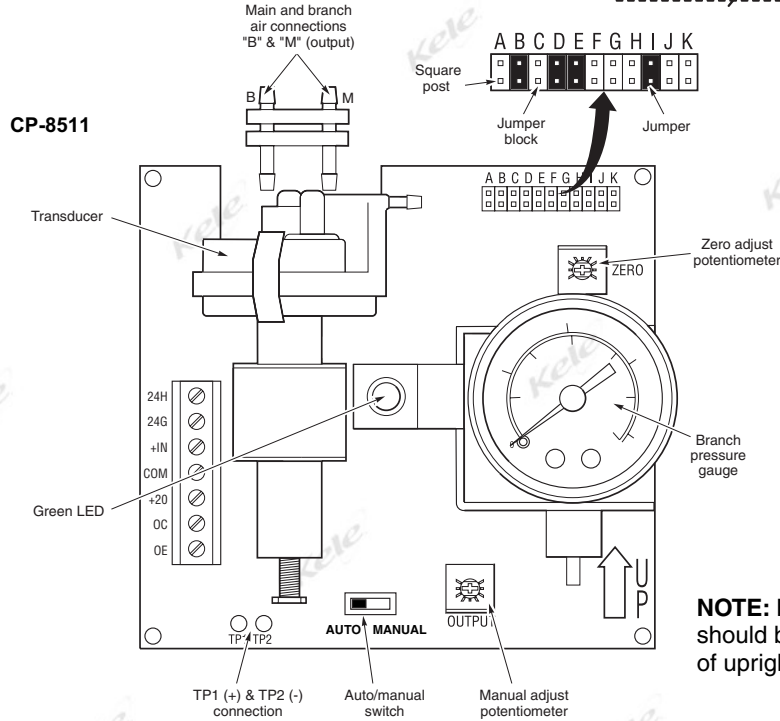
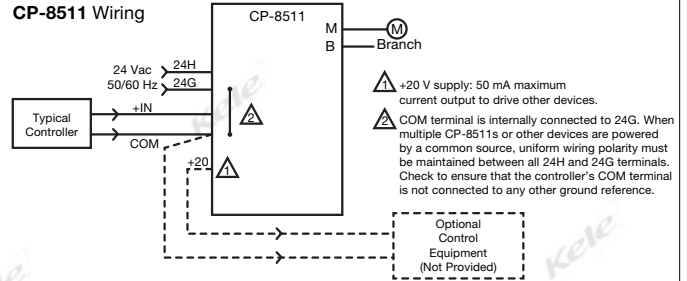
CP-8552 Wired for current input (loop-powered)



CP-8552 Wired for voltage input (factory calibrated for 0-10 VDC range, if switched to 6-9 VDC range the zero and span must be re-calibrated)



CP-8511 Wiring



NOTE: For best results, the transducer should be mounted within five degrees of upright position.

ORDERING INFORMATION

MODEL

CP-8551

CP-8552

CP-8511-024

DESCRIPTION

Current/pneumatic transducer, 4-20 mA input, 3-15 psig (21-103 kPa) output

Current or voltage/pneumatic transducer, 4-20 mA, 6-9 VDC or 0-10 VDC input, 3-15 psig (21-103 kPa) output

Current or voltage/pneumatic transducer, multiple field selectable mA or VDC inputs, 3-15 psig (21-103 kPa) output

RELATED PRODUCTS

BAM-1000

DIN-3F

FILN05

T-101

35 mm aluminum DIN mounting rail 39.4" (1m)

35 mm DIN rail, steel, 39.4" (1m), RoHS compliant

Inline disposable air filter, straight, with barbs for 1/4" OD tubing

1/4" OD black poly tubing, 1 coil, 250 ft (76 m)