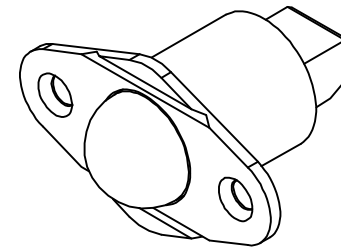
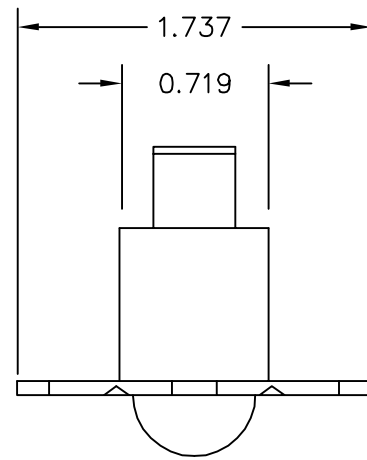
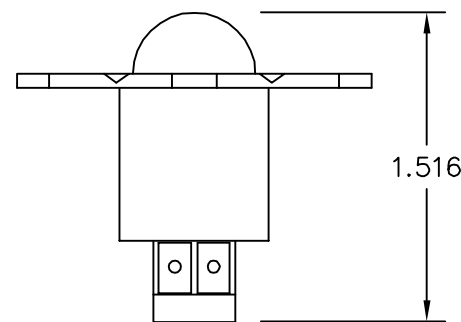
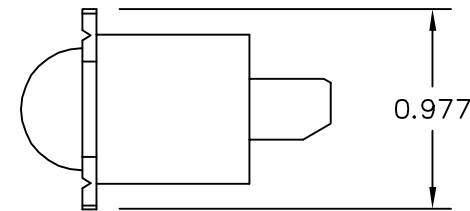
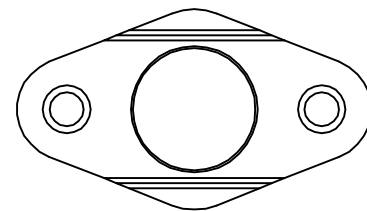
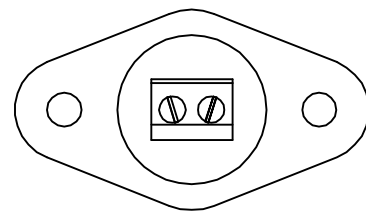


DATE	REV	DESCRIPTION	DR.	CK.
21-03-05	0	ECO 6438 INITIAL RELEASE	LS	



NOTES:

1. FEATURES: THIS SWITCH IS A DOOR SWITCH FOR USE AS AN INPUT TO A GUEST ROOM HVAC MANAGEMENT SYSTEM OR SIMILAR APPLICATION.
2. FEATURES: THE SWITCH IS A DRY CONTACT IN A NORMALLY OPEN CONFIGURATION.
3. MATERIALS: THE ENCLOSURE IS MOLDED WHITE PLASTIC.
4. MOUNTING: THE SWITCH IS DESIGNED TO BE RECESSED IN A 0.75 INCH HOLE IN THE DOOR JAM. THE SWITCH CAN ALSO BE PANEL MOUNTED USING A PROVIDED BACKING PLATE FOR THE SCREWS TO THREAD INTO.
5. PACKAGING: THE SWITCH IS INDIVIDUALLY BAGGED WITH MOUNTING HARDWARE INCLUDING TWO SCREWS.
6. DIMENSIONS: THE DRAWING DIMENSIONS SHOWN ARE FOR REFERENCE ONLY.
7. THE SWITCH SHALL CONFORM TO THE SPECIFICATIONS AND RATINGS LISTED BELOW.



SPECIFICATIONS:

MAXIMUM VOLTAGE	30 VDC
MAXIMUM CURRENT	0.2 AMP
OPERATE TEMPERATURE	-40°C ~ 125°C (-40°F ~ 257°F)
SWITCH CONTACTS	FORM A, DRY CONTACTS
OPERATE HUMIDITY	95% RH MAX.

TOLERANCES EXCEPT AS NOTED	SUNNE CONTROLS DIV OF PECO INC. PORTLAND, OR. USA		
DECIMAL .X= .XX= .XXX=	PART NUMBER 68379	SCALE FULL	
ANGULAR ±	TITLE SENSOR, OCCUPANCY, SE200-001		
ACAD FILE SE200001	DRAWING NUMBER B SE200-001		DIST. CODE PC