



**LOAD TRENDING AND CONTROL RELAY  
IN ONE PACKAGE**



US Patent 6,005,760

H931



24V SPST Relay

H951



12V SPST Relay

# Current Transducers with Relay: 4-20mA Analog Output

The Hawkeye 931/951 provide accurate load trending information with a proportional 4-20mA output signal. These devices offer three amperage ranges for versatility, with easy slide-switch selection. The command relay is fully integrated in the device, but it is isolated from the current sensor. This combination makes these products ideal for start/stop control and status monitoring of motors, using one device instead of two.

**APPLICATIONS**

- Load trending
- Motor control
- Positive proof of flow

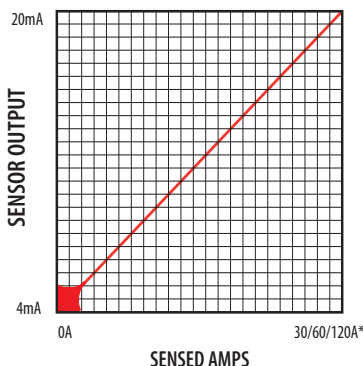
**Loop-powered analog current sensor with integral start/stop command relay**

- Reduces the number of installed components... saves time and space
- Self-gripping split-core for fast retrofit installation...no need to remove conductor
- One device to install for start/stop & status... reduces installation charges
- Power the current sensor and receive the 4-20mA signal with only two wires...fewer wires required than with traditional 3-wire sensors

**Selectable factory calibrated ranges up to 120A for increased flexibility and resolution**

- Factory calibrated switch-selectable ranges (30/60/120A) for high resolution and installation ease
- No jumpers on unit...reduce installation error
- Removable mounting bracket for installation flexibility
- Bracket can be installed in three different configurations...added flexibility
- Command relay switches up to 5A@250VAC
- 5-year limited warranty

**H931/951 LINEAR OUTPUT**  
Scale software as shown



\*Factory calibrated ranges selected with the amperage range switch



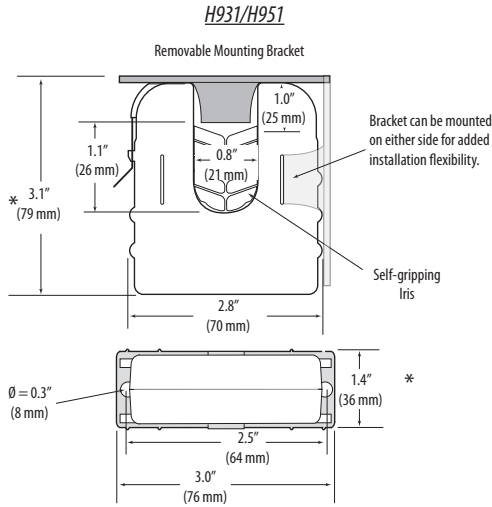
**SPECIFICATIONS**

Sensor Power	30mA (max.)@12-30VDC
Insulation Class	600VAC RMS
Frequency Range	50/60Hz
Temperature Range	-15° to 60°C (5° to 140°F)
Humidity Range	10 - 90% RH, non-condensing
Accuracy	±2% full scale from 10% to 100% (selected range)
Response Time	2 sec.
Terminal Block Maximum Wire Size	14 AWG
Terminal Block Torque (nominal)	4 in-lbs (0.45 N-m)
Agency Approvals	UL 508 open device listing

Do not use LED status indicators as evidence of applied voltage



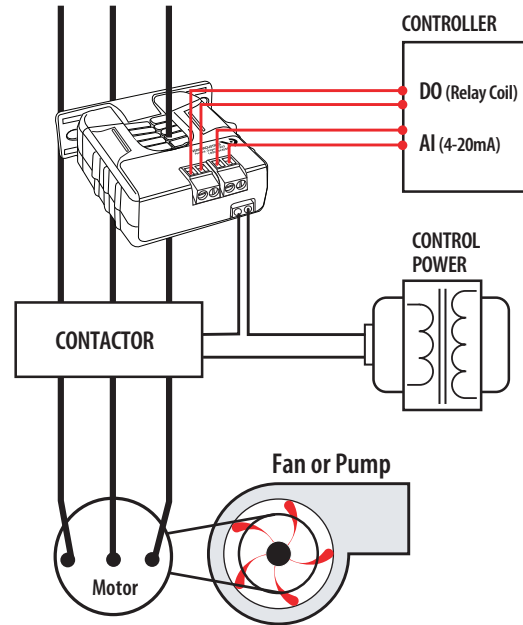
**DIMENSIONAL DRAWINGS**



\*Terminal block may extend up to 1/8"; slide switch may extend up to 1/4" over the height dimensions shown.

**APPLICATION/WIRING EXAMPLE**

*Trending & Controlling Motor Loads with the Hawkeye 931*



RELAY CONTACT RATINGS (N.O.)		
Resistive.....	5A(r)@250VAC	
	5A(r)@30VDC	
Inductive.....	2A(r)@250VAC	
	2A(r)@30VDC	
TYPICAL COIL PERFORMANCE		
Voltage	AC	DC
24 .....	15	15
12 .....		20

**ORDERING INFORMATION**



MODEL	AMPERAGE RANGE	SENSOR OUTPUT	RELAY TYPE	RELAY COIL	RELAY	RELAY POWER LED	UL
H931	0 - 30/60/120A	4 - 20mA	SPST, N.O.	24VAC/DC	●	●	●
H951				12VDC nom.	●	●	●

**ACCESSORIES**

DIN Rail Clip Set, DIN Rail, and DIN Stop Clip...see page 219.