

POWER MONITORING & PROTECTION

MOTORSAYER™ SINGLE-PHASE VOLTAGE MONITOR 50R SERIES



DESCRIPTION

The MotorSaver™ 50R Series Single-Phase Voltage Monitor voltage sensing circuit constantly monitors the single-phase power for a low voltage condition. When a harmful condition is detected, the 50R Series output relay is deactivated after a fixed trip delay time. The output relay reactivates after power line conditions return to an acceptable level for a fixed restart time delay period. The trip delay prevents nuisance tripping due to rapidly fluctuating power line conditions. Single-phase motors on fans, compressors, air conditioners, heat pumps, water pumps, and small conveyor motors can be protected by the 50R Series.



FEATURES

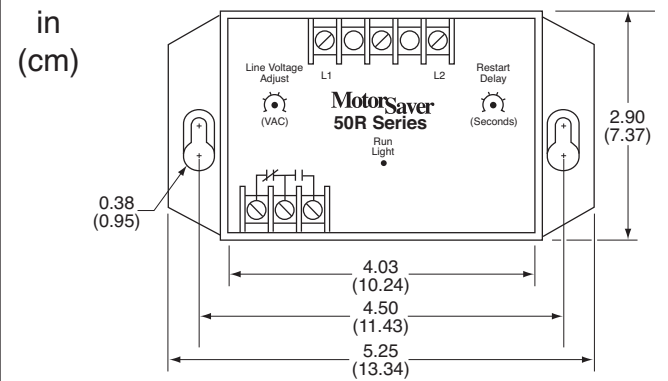
- Single-phase motor protection from low voltage conditions
- Two-color LED for normal and fault condition indication
- General-purpose relay for switching loads up to 10A at 240 VAC
- UL and ULC listed

SPECIFICATIONS

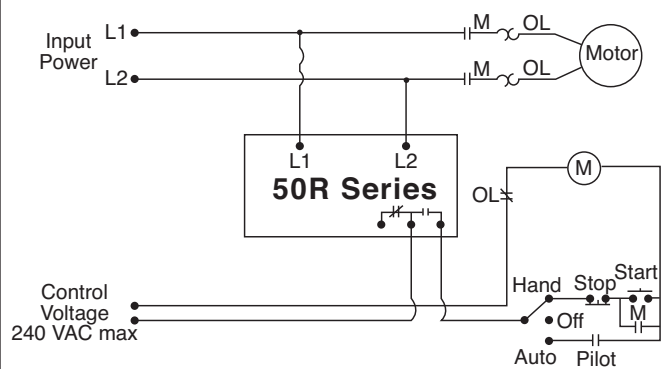
Frequency	50* or 60 Hz
Contact Rating	SPDT, 10A general-purpose or 480 VA @ 240 VAC
Line Voltage Monitored	
50R-100	95-120 VAC
50R-200	190-240 VAC
Low Voltage Trip	90% of set point
Low Voltage Reset	93% of set point
Reset Delay Time after Power Loss	2 seconds
Trip Delay Time Low Voltage	2 seconds
Weight	1.0 lb (0.45 kg)
Approvals	UL and cUL listed, file #E68520
Warranty	5 years

* 50 Hz will increase all delay times by 20%.

DIMENSIONS



WIRING



ORDERING INFORMATION

MODEL	DESCRIPTION
50R-100	MotorSaver Single-Phase Voltage Monitor, 95-120 VAC
50R-200	MotorSaver Single-Phase Voltage Monitor, 190-240 VAC