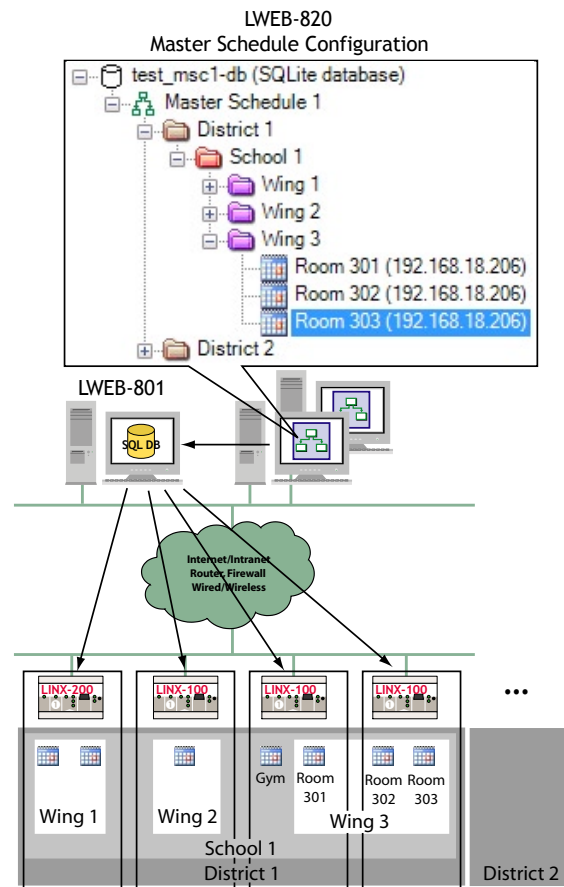


Features

- ◆ Easy and clear organization of time schedules and calendars on distributed L-INX Automation Servers
- ◆ Time schedules and calendars are hierarchically structured
- ◆ Intuitive user interface for non-technical personnel
- ◆ Detects local changes of parameters on distributed L-INX Automation Servers
- ◆ User Management with user rights management
- ◆ Add-on to the LWEB-801 Server
- ◆ Support of multiple LWEB-820 clients in a project
- ◆ Support of multiple users
- ◆ L-INX Automation Servers supported: LINX-100, LINX-101, LINX-200, LINX-201
- ◆ Runs on:
Windows® 2000,
Windows® XP,
Windows® 2008 Server,
Windows® Vista



Description

The LWEB-820 Master Schedule Configurator provides hierarchical handling of distributed time schedules and calendars on multiple LINX-10x (CEA-709) and LINX-20x (BACnet) Automation Servers via an IP-connection.

Each L-INX Automation Server can host multiple time schedules. Multiple Automation Servers might be placed in distributed Real Estates or multi-story buildings. When managing multiple facilities with a large number of devices, it is not practical to change each time schedule or Calendar separately. With the LWEB-820 Master Schedule Configurator, it is an easy task to organize Time Schedules and Calendars on distributed L-INX Automation Servers due to the clear hierarchical structure (e.g. district → school → wing).

Entries on the highest level have an impact on all assigned schedulers and calendars located in the distributed Automation Servers. Entries on lower hierarchy level effect only schedules and calendars below. Local changes of schedule parameters on an Automation Server via LWEB-800 or a Web Browser are detected by the Master Schedule Configurator.

The master schedule configuration is stored in

a central database (LWEB-801 Server).

The LWEB-820 Master Schedule Configurator can be installed on multiple PCs. Multiple users can use the LWEB-820 Master Schedule Configurator in parallel.

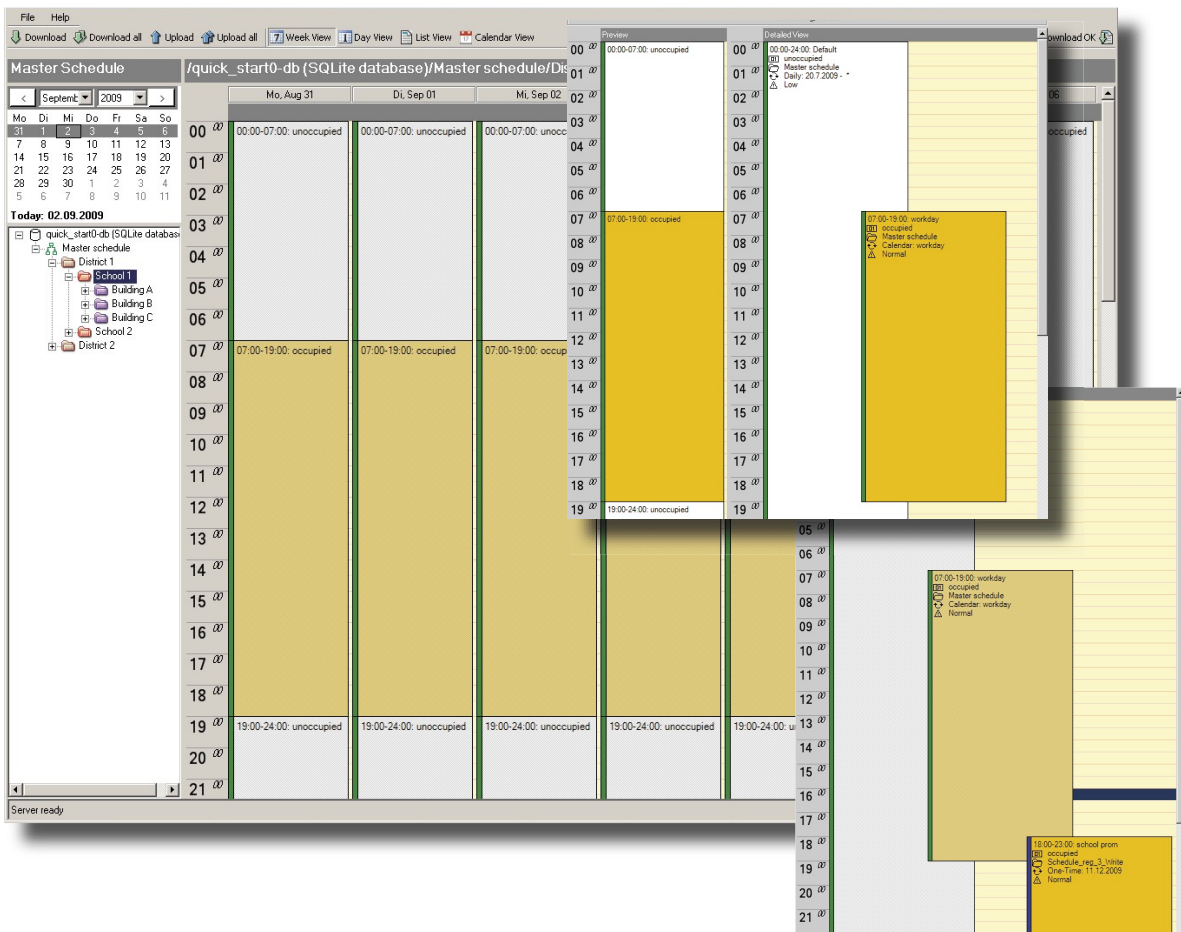
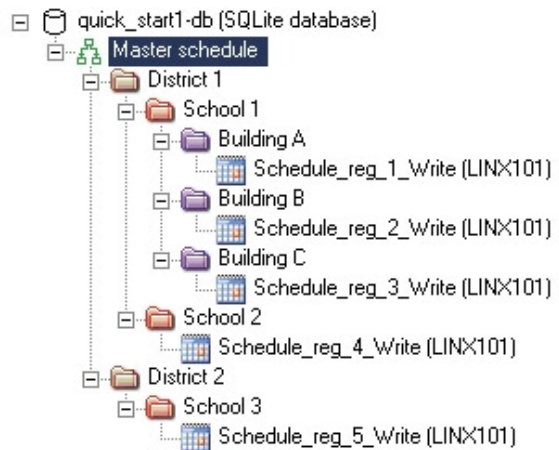
The Time Schedule and Calendar parameter down- and upload is handled by the LWEB-801 Server application.

Order Number	Configuration
LWEB-820	LWEB-820 Master Schedule Configurator / Limited to 2 concurrent users
LWEB-820-LIC5	5 additional users
LWEB-801	L-WEB 801 Server limited to 5 devices
LWEB-801-LIC5	5 additional devices
LWEB-801-LIC10	10 additional devices
LWEB-801-LIC25	25 additional devices
LWEB-801-LIC50	50 additional devices
LWEB-801-LIC100	100 additional devices

Example - Time Scheduling for Schools

Schools need to handle different Time Schedules per class room. An exception day (e.g. parent-teacher conference) for a number of class rooms and other building areas needs to be defined. Calendars for several school buildings with entries of common holidays must be administrated.

The hierarchically structure of LWEB-820 allows organizing schedules and calendars in a clear manner avoiding to administrate every time schedule and calendar one by one. The intuitive user interface allows e.g. the school secretary to adapt time schedule and calendar parameter. User rights limit the access to a time schedule for a class room, a school building, or distributed schools in a district.



Scheduled events organized by LWEB-820 can be defined in a Week View, Day View, or List View.

LC3020, L-Chip, L-Core, L-DALI, L-GATE, L-INX, L-IP, LPA, L-Proxy, L-Switch, L-Term, L-VIS, L-WEB, and ORION stack are trademarks of LOYTEC electronics GmbH. Microsoft and Windows are either registered trademarks or trademarks of Microsoft Corporation in the United States and/or other countries. Other trademarks and trade names used in this document refer either to the entities claiming the markets and names, or to their products. LOYTEC disclaims proprietary interest in the markets and names of others.

LOYTEC reserves the right to make changes to these specifications without further notice for performance, reliability, production technique, and other considerations.