

# ACTUATORS & DAMPERS

## NON-MERCURY DAMPER POSITION SWITCH

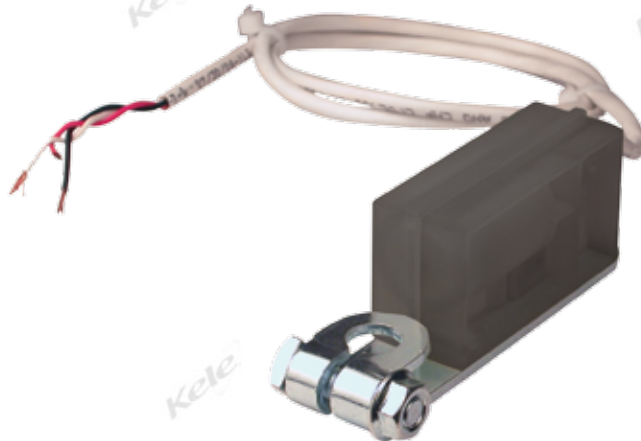
### TS-475 SERIES

#### DESCRIPTION

The **TS-475 Series** damper position switches use a roller ball and mechanical switch to provide open/closed damper position status. The **TS-475 Series** offers a non-mercury alternative for applications and for projects which do not allow mercury.

#### SPECIFICATIONS

<b>Wiring</b>	3' (0.9 m) length, AWG 18, 3-conductor plenum-rated cable; black = common, white = N.C., red = N.O.
<b>Switch Type</b>	Mechanical roller ball, SPDT
<b>Contact Rating</b>	5A @ 120/250 VAC
<b>Switch Angle</b>	N.O. makes at 10° above horizontal, breaks at 5° below horizontal
<b>Operating Temperature</b>	-30° to 130°F (-34° to 54°C)
<b>Dimensions</b>	
<b>TS-</b>	1.5"H x 1.5"W x 4.4"L (3.8 x 3.8 x 11.1 cm)
<b>TS1-</b>	1.8"H x 1.5"W x 5.5"L (4.5 x 3.8 x 14.0 cm)
<b>Weight</b>	
<b>TS-</b>	0.4 lb (0.2 Kg)
<b>TS1-</b>	0.7 lb (0.3 Kg)
<b>Mounting</b>	
<b>TS-</b>	1/2" (1.3 cm) damper shaft
<b>TS1-</b>	1" (2.5 cm) damper shaft
<b>Enclosure Rating</b>	UL 94V-0 flammability rating
<b>Warranty</b>	1 year



TS-475

#### ORDERING INFORMATION

MODEL	DESCRIPTION
<b>TS-475</b>	Non-mercury damper position switch, SPDT, for 1/2" damper shaft
<b>TS1-475</b>	Non-mercury damper position switch, SPDT, for 1" damper shaft